

TGFBRAP1 Rabbit Polyclonal Antibody



CAB14386

Product Information

Size:

20uL, 50uL, 100uL, 200uL

Observed MW:

97kDa

Calculated MW:

97kDa

Applications:

WB

Reactivity:

Human, Mouse

Antibody Information

Recommended dilutions:

WB 1:500 - 1:2000

Source:

Rabbit

Isotype:

IgG

Purification:

Affinity purification

Protein Background

This gene encodes a protein that binds to transforming growth factor-beta (TGF-beta) receptors and plays a role in TGF-beta signaling. The encoded protein acts as a chaperone in signaling downstream of TGF-beta. It is involved in signal-dependent association with SMAD4. The protein is also a component of mammalian CORVET, a multisubunit tethering protein complex that is involved in fusion of early endosomes.

Immunogen information

Gene ID:

9392

Uniprot

Q8WUH2

Synonyms:

TGFBRAP1; TRAP-1; TRAP1; VPS3

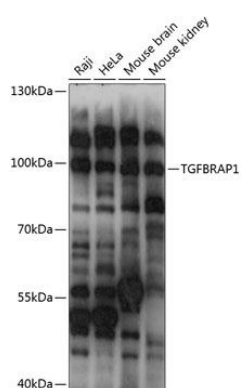
Immunogen:

Recombinant fusion protein containing a sequence corresponding to amino acids 621-860 of human TGFBRAP1 (NP_004248.2).

Storage:

Store at -20°C. Avoid freeze / thaw cycles. Buffer: PBS with 0.02% sodium azide, 50% glycerol, pH7.3.

Product Images



Western blot analysis of extracts of various cell lines, using TGFBRAP1 antibody (CAB14386) at 1:1000 dilution. Secondary antibody: HRP Goat Anti-Rabbit IgG (H+L) (CABS014) at 1:10000 dilution. Lysates/proteins: 25ug per lane. Blocking buffer: 3% nonfat dry milk in TBST. Detection: ECL Basic Kit (CABM00020). Exposure time: 1s.