

# JAKMIP2 Rabbit Polyclonal Antibody



CAB14387

## Product Information

### Size:

20uL, 50uL, 100uL, 200uL

### Observed MW:

86kDa

### Calculated MW:

91kDa/93kDa/94kDa/96kDa

### Applications:

WB IF

### Reactivity:

Human, Mouse, Rat

## Protein Background

The protein encoded by this gene is reported to be a component of the Golgi matrix. It may act as a golgin protein by negatively regulating transit of secretory cargo and by acting as a structural scaffold of the Golgi. Alternative splicing results in multiple transcript variants.

## Immunogen information

### Gene ID:

9832

### Uniprot

Q96AA8

### Synonyms:

JAKMIP2; JAMIP2; NECC1

### Immunogen:

Recombinant fusion protein containing a sequence corresponding to amino acids 561-810 of human JAKMIP2 (NP\_055605.2).

### Storage:

Store at -20°C. Avoid freeze / thaw cycles. Buffer: PBS with 0.02% sodium azide, 50% glycerol, pH7.3.

## Antibody Information

### Recommended dilutions:

WB 1:500 - 1:2000 IF 1:50 - 1:100

### Source:

Rabbit

### Isotype:

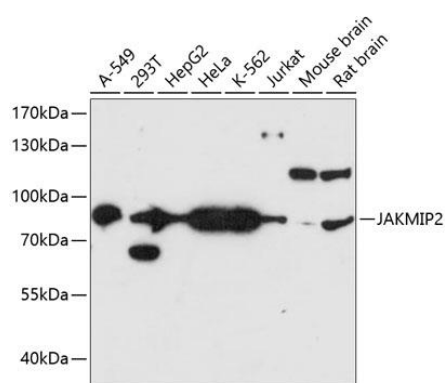
IgG

### Purification:

Affinity purification

## Product Images

---



Western blot analysis of extracts of various cell lines, using JAKMIP2 antibody (CAB14387) at 1:3000 dilution. Secondary antibody: HRP Goat Anti-Rabbit IgG (H+L) (CABS014) at 1:10000 dilution. Lysates/proteins: 25ug per lane. Blocking buffer: 3% nonfat dry milk in TBST. Detection: ECL Basic Kit (CABM00020). Exposure time: 30s.