

NME6 Rabbit Polyclonal Antibody



CAB14388

Product Information

Size:

20uL, 50uL, 100uL, 200uL

Observed MW:

21kDa

Calculated MW:

13kDa/18kDa/21kDa

Applications:

WB IHC IF

Reactivity:

Human, Mouse, Rat

Protein Background

Nucleoside diphosphate (NDP) kinases (EC 2.7.4.6), such as NME6, are ubiquitous enzymes that catalyze transfer of gamma-phosphates, via a phosphohistidine intermediate, between nucleoside and dioxynucleoside tri- and diphosphates (Mehus et al., 1999 [PubMed 10453732]).[supplied by OMIM, Jul 2010]

Immunogen information

Gene ID:

10201

Uniprot

O75414

Synonyms:

NME6; IPIA-ALPHA; NDK 6; NM23-H6; NDK6

Antibody Information

Recommended dilutions:

WB 1:500 - 1:2000 IHC 1:50
- 1:100 IF 1:50 - 1:100

Source:

Rabbit

Isotype:

IgG

Purification:

Affinity purification

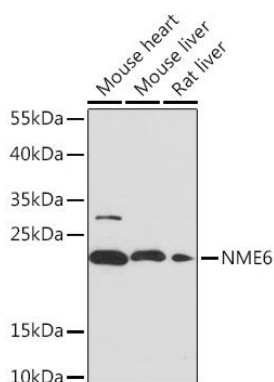
Immunogen:

Recombinant fusion protein containing a sequence corresponding to amino acids 9-194 of human NME6 (NP_005784.1).

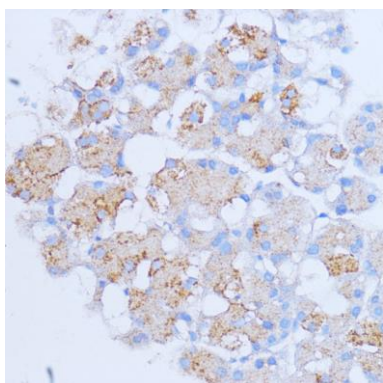
Storage:

Store at -20°C. Avoid freeze / thaw cycles. Buffer: PBS with 0.02% sodium azide, 50% glycerol, pH7.3.

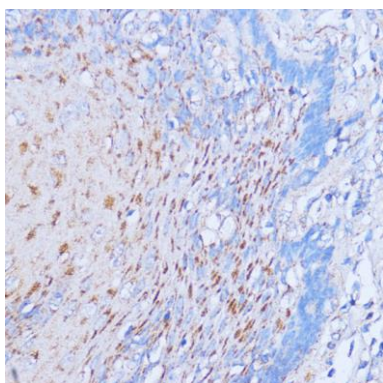
Product Images



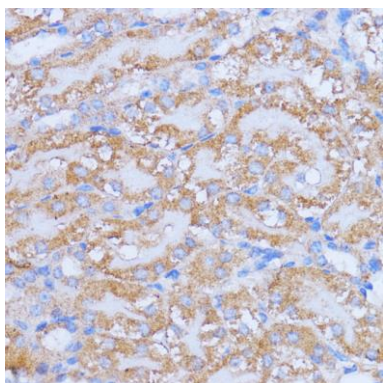
Western blot analysis of extracts of various cell lines, using NME6 Rabbit pAb (CAB14388) at 1:1000 dilution. Secondary antibody: HRP Goat Anti-Rabbit IgG (H+L) (CABS014) at 1:10000 dilution. Lysates/proteins: 25ug per lane. Blocking buffer: 3% nonfat dry milk in TBST. Detection: ECL Basic Kit (CABM00020). Exposure time: 120s.



Immunohistochemistry of paraffin-embedded rat pancreas using NME6 antibody (CAB14388) at dilution of 1:100 (40x lens).



Immunohistochemistry of paraffin-embedded human esophageal using NME6 antibody (CAB14388) at dilution of 1:100 (40x lens).



Immunohistochemistry of paraffin-embedded mouse kidney using NME6 antibody (CAB14388) at dilution of 1:100 (40x lens).