

LRP1 Rabbit Polyclonal Antibody



CAB1439

Product Information

Size:

20uL, 50uL, 100uL, 200uL

Observed MW:

505kDa

Calculated MW:

31kDa/504kDa

Applications:

WB IHC

Reactivity:

Human, Mouse, Rat

Antibody Information

Recommended dilutions:

WB 1:500 - 1:1000 IHC 1:50
- 1:100

Source:

Rabbit

Isotype:

IgG

Purification:

Affinity purification

Protein Background

This gene encodes a member of the low-density lipoprotein receptor family of proteins. The encoded preproprotein is proteolytically processed by furin to generate 515 kDa and 85 kDa subunits that form the mature receptor (PMID: 8546712). This receptor is involved in several cellular processes, including intracellular signaling, lipid homeostasis, and clearance of apoptotic cells. In addition, the encoded protein is necessary for the alpha 2-macroglobulin-mediated clearance of secreted amyloid precursor protein and beta-amyloid, the main component of amyloid plaques found in Alzheimer patients. Expression of this gene decreases with age and has been found to be lower than controls in brain tissue from Alzheimer's disease patients.

Immunogen information

Gene ID:

4035

Uniprot

Q07954

Synonyms:

LRP1; A2MR; APOER; APR; CD91; IGFBP3R; KPA; LRP; LRP1A;
TGFBRS

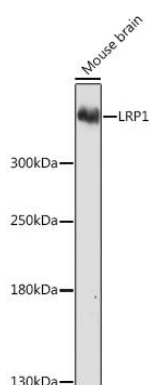
Immunogen:

Recombinant fusion protein containing a sequence corresponding to amino acids 20-270 of human LRP1 (NP_002323.2).

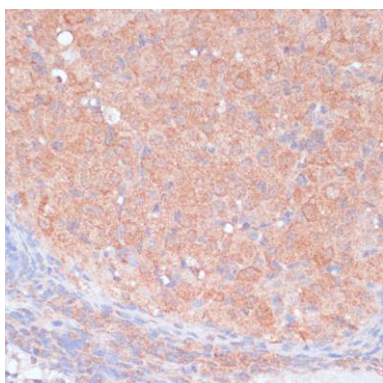
Storage:

Store at -20°C. Avoid freeze / thaw cycles. Buffer: PBS with 0.02% sodium azide, 50% glycerol, pH7.3.

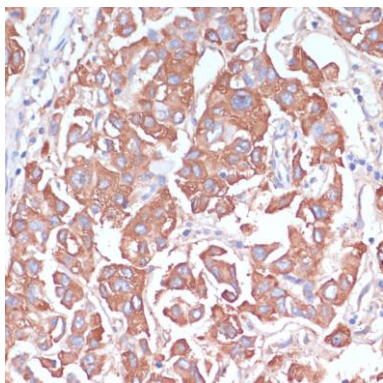
Product Images



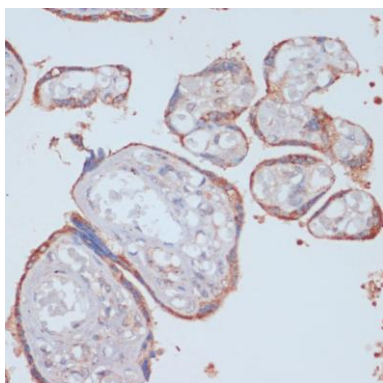
Western blot analysis of extracts of Mouse brain, using LRP1 Rabbit pAb (CAB1439) at 1:1000 dilution. Secondary antibody: HRP Goat Anti-Rabbit IgG (H+L) (CABS014) at 1:10000 dilution. Lysates/proteins: 25ug per lane. Blocking buffer: 3% nonfat dry milk in TBST. Detection: ECL Basic Kit (CABM00020). Exposure time: 180s.



Immunohistochemistry of paraffin-embedded rat ovary using LRP1 antibody (CAB1439) at dilution of 1:100 (40x lens).



Immunohistochemistry of paraffin-embedded human liver cancer using LRP1 antibody (CAB1439) at dilution of 1:100 (40x lens).



Immunohistochemistry of paraffin-embedded human placenta using LRP1 antibody (CAB1439) at dilution of 1:100 (40x lens).