

# CCDC59 Rabbit Polyclonal Antibody



CAB14399

---

## Product Information

### Size:

20uL, 50uL, 100uL, 200uL

### Observed MW:

29kDa

### Calculated MW:

28kDa

### Applications:

WB IHC IF

### Reactivity:

Human, Mouse, Rat

## Antibody Information

### Recommended dilutions:

WB 1:500 - 1:2000 IHC 1:50  
- 1:100 IF 1:50 - 1:100

### Source:

Rabbit

### Isotype:

IgG

### Purification:

Affinity purification

## Protein Background

### Immunogen information

#### Gene ID:

29080

#### Uniprot

Q9P031

#### Synonyms:

CCDC59; BR22; HSPC128; TAP26

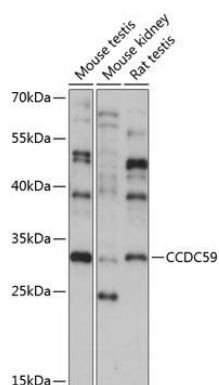
#### Immunogen:

Recombinant fusion protein containing a sequence corresponding to amino acids 1-241 of human CCDC59 (NP\_054886.2).

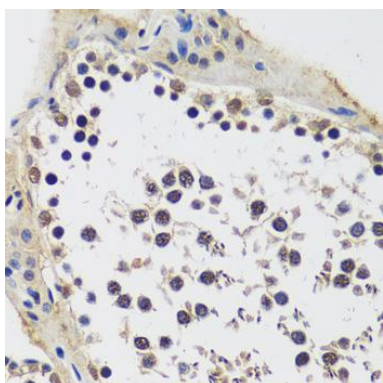
#### Storage:

Store at -20°C. Avoid freeze / thaw cycles. Buffer: PBS with 0.02% sodium azide, 50% glycerol, pH7.3.

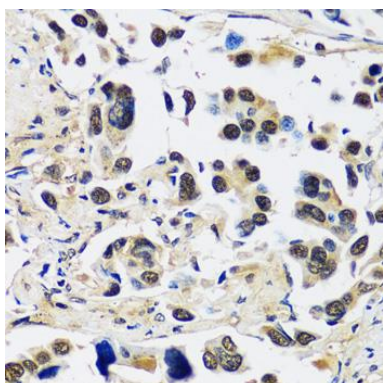
## Product Images



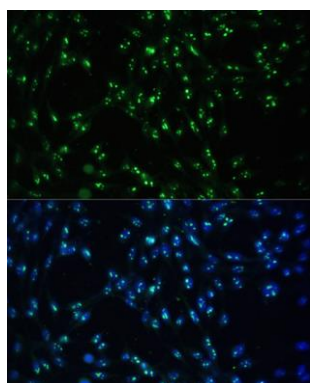
Western blot analysis of extracts of various cell lines, using CCDC59 antibody (CAB14399) at 1:1000 dilution. Secondary antibody: HRP Goat Anti-Rabbit IgG (H+L) (CABS014) at 1:10000 dilution. Lysates/proteins: 25ug per lane. Blocking buffer: 3% nonfat dry milk in TBST. Detection: ECL Basic Kit (CABM00020). Exposure time: 15s.



Immunohistochemistry of paraffin-embedded rat testis using CCDC59 antibody (CAB14399) at dilution of 1:100 (40x lens).



Immunohistochemistry of paraffin-embedded human lung cancer using CCDC59 antibody (CAB14399) at dilution of 1:100 (40x lens).



Immunofluorescence analysis of NIH-3T3 cells using CCDC59 antibody (CAB14399) at dilution of 1:100. Blue: DAPI for nuclear staining.