

# CA2 Rabbit Polyclonal Antibody



CAB1440

---

## Product Information

### Size:

20uL, 50uL, 100uL, 200uL

### Observed MW:

27kDa

### Calculated MW:

29kDa

### Applications:

WB IF

### Reactivity:

Human, Mouse

## Protein Background

The protein encoded by this gene is one of several isozymes of carbonic anhydrase, which catalyzes reversible hydration of carbon dioxide. Defects in this enzyme are associated with osteopetrosis and renal tubular acidosis. Two transcript variants encoding different isoforms have been found for this gene.

## Immunogen information

### Gene ID:

760

### Uniprot

P00918

### Synonyms:

CA2; CA-II; CAC; CAII; Car2; HEL-76; HEL-S-282

## Antibody Information

### Recommended dilutions:

WB 1:500 - 1:2000 IF 1:10 - 1:100

### Source:

Rabbit

### Isotype:

IgG

### Purification:

Affinity purification

### Immunogen:

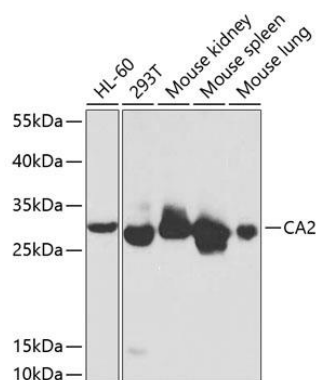
Recombinant fusion protein containing a sequence corresponding to amino acids 1-250 of human CA2 (NP\_000058.1).

### Storage:

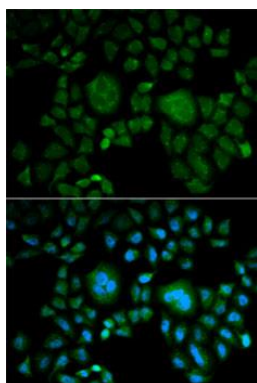
Store at -20°C. Avoid freeze / thaw cycles. Buffer: PBS with 0.02% sodium azide, 50% glycerol, pH7.3.

## Product Images

---



Western blot analysis of extracts of various cell lines, using CA2 antibody (CAB1440) at 1:1000 dilution. Secondary antibody: HRP Goat Anti-Rabbit IgG (H+L) (CABS014) at 1:10000 dilution. Lysates/proteins: 25ug per lane. Blocking buffer: 3% nonfat dry milk in TBST.



Immunofluorescence analysis of HeLa cells using CA2 antibody (CAB1440). Blue: DAPI for nuclear staining.