

# TXNDC12 Rabbit Polyclonal Antibody



CAB14403

## Product Information

### Size:

20uL, 50uL, 100uL, 200uL

### Observed MW:

19kDa

### Calculated MW:

19kDa

### Applications:

WB IHC IF

### Reactivity:

Human, Mouse, Rat

## Antibody Information

### Recommended dilutions:

WB 1:500 - 1:2000 IHC 1:50  
- 1:200 IF 1:50 - 1:100

### Source:

Rabbit

### Isotype:

IgG

### Purification:

Affinity purification

## Protein Background

This gene encodes a member of the thioredoxin superfamily. Members of this family are characterized by a conserved active motif called the thioredoxin fold that catalyzes disulfide bond formation and isomerization. This protein localizes to the endoplasmic reticulum and has a single atypical active motif. The encoded protein is mainly involved in catalyzing native disulfide bond formation and displays activity similar to protein-disulfide isomerases. This protein may play a role in defense against endoplasmic reticulum stress. Alternate splicing results in both coding and non-coding variants.

## Immunogen information

### Gene ID:

51060

### Uniprot

O95881

### Synonyms:

TXNDC12; AG1; AGR1; ERP16; ERP18; ERP19; PDIA16; TLP19; hAG-1; hTLP19

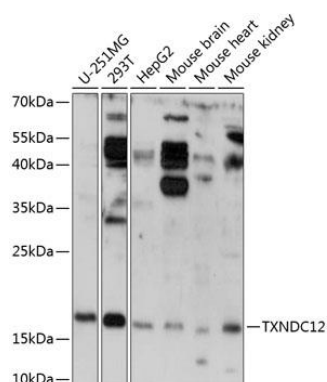
### Immunogen:

Recombinant fusion protein containing a sequence corresponding to amino acids 93-172 of human TXNDC12 (NP\_056997.1).

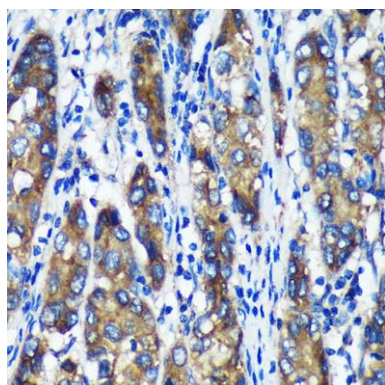
### Storage:

Store at -20°C. Avoid freeze / thaw cycles. Buffer: PBS with 0.02% sodium azide, 50% glycerol, pH7.3.

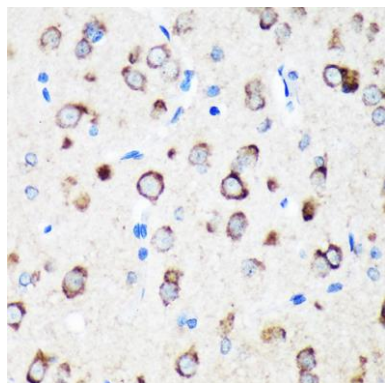
## Product Images



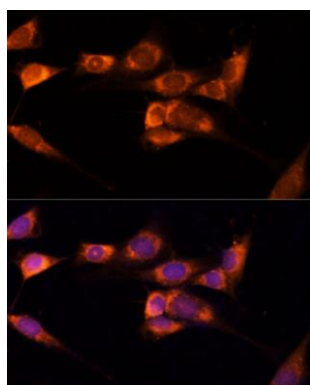
Western blot analysis of extracts of various cell lines, using TXNDC12 antibody (CAB14403) at 1:3000 dilution. Secondary antibody: HRP Goat Anti-Rabbit IgG (H+L) (CABS014) at 1:10000 dilution. Lysates/proteins: 25ug per lane. Blocking buffer: 3% nonfat dry milk in TBST. Detection: ECL Basic Kit (CABM00020). Exposure time: 90s.



Immunohistochemistry of paraffin-embedded Human liver cancer using TXNDC12 Rabbit pAb (CAB14403) at dilution of 1:100 (40x lens).



Immunohistochemistry of paraffin-embedded Rat brain using TXNDC12 Rabbit pAb (CAB14403) at dilution of 1:100 (40x lens).



Immunofluorescence analysis of NIH-3T3 cells using TXNDC12 Polyclonal Antibody (CAB14403) at dilution of 1:100 (40x lens). Blue: DAPI for nuclear staining.