

SIX4 Rabbit Polyclonal Antibody



CAB14406

Product Information

Size:

20uL, 50uL, 100uL, 200uL

Observed MW:

83kDa

Calculated MW:

82kDa

Applications:

WB

Reactivity:

Human, Mouse

Protein Background

This gene encodes a member of the homeobox family, subfamily SIX. The drosophila homolog is a nuclear homeoprotein required for eye development. Studies in mouse show that this gene product functions as a transcription factor, and may have a role in the differentiation or maturation of neuronal cells.

Immunogen information

Gene ID:

51804

Uniprot

Q9UIU6

Synonyms:

SIX4; AREC3

Antibody Information

Recommended dilutions:

WB 1:500 - 1:2000

Source:

Rabbit

Isotype:

IgG

Purification:

Affinity purification

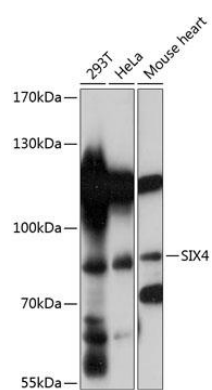
Immunogen:

Recombinant fusion protein containing a sequence corresponding to amino acids 512-781 of human SIX4 (NP_059116.3).

Storage:

Store at -20°C. Avoid freeze / thaw cycles. Buffer: PBS with 0.02% sodium azide, 50% glycerol, pH7.3.

Product Images



Western blot - SIX4 Polyclonal Antibody (CAB14406)