

RHBDL2 Rabbit Polyclonal Antibody



CAB14407

Product Information

Size:

20uL, 50uL, 100uL, 200uL

Observed MW:

34kDa

Calculated MW:

15kDa/34kDa

Applications:

WB

Reactivity:

Mouse, Rat

Protein Background

The protein encoded by this gene is a member of the rhomboid family of integral membrane proteins. This family contains proteins that are related to *Drosophila* rhomboid protein. Members of this family are found in both prokaryotes and eukaryotes and are thought to function as intramembrane serine proteases. The encoded protein is thought to release soluble growth factors by proteolytic cleavage of certain membrane-bound substrates, including ephrin B2 and ephrin B3. Two transcript variants encoding different isoforms have been found for this gene.

Immunogen information

Gene ID:

54933

Uniprot

Q9NX52

Synonyms:

RHBDL2; RRP2

Antibody Information

Recommended dilutions:

WB 1:500 - 1:2000

Source:

Rabbit

Isotype:

IgG

Purification:

Affinity purification

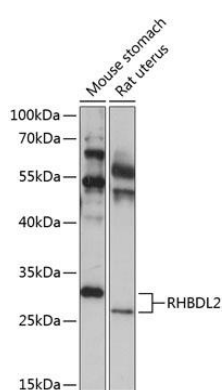
Immunogen:

Recombinant fusion protein containing a sequence corresponding to amino acids 12-130 of human RHBDL2 (NP_060291.2).

Storage:

Store at -20°C. Avoid freeze / thaw cycles. Buffer: PBS with 0.02% sodium azide, 50% glycerol, pH7.3.

Product Images



Western blot analysis of extracts of various cell lines, using RHBDL2 antibody (CAB14407) at 1:1000 dilution. Secondary antibody: HRP Goat Anti-Rabbit IgG (H+L) (CABS014) at 1:10000 dilution. Lysates/proteins: 25ug per lane. Blocking buffer: 3% nonfat dry milk in TBST. Detection: ECL Basic Kit (CABM00020). Exposure time: 40s.