

SLC22A23 Rabbit Polyclonal Antibody



CAB14419

Product Information

Size:

20uL, 50uL, 100uL, 200uL

Observed MW:

74kDa

Calculated MW:

34kDa/38kDa/44kDa/73kDa

Applications:

WB

Reactivity:

Human, Mouse, Rat

Antibody Information

Recommended dilutions:

WB 1:500 - 1:2000

Source:

Rabbit

Isotype:

IgG

Purification:

Affinity purification

Protein Background

Immunogen information

Gene ID:

63027

Uniprot

A1A5C7

Synonyms:

SLC22A23; C6orf85

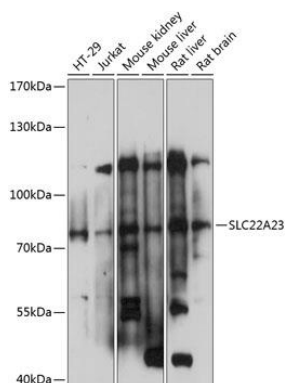
Immunogen:

Recombinant fusion protein containing a sequence corresponding to amino acids 336-405 of human SLC22A23 (NP_068764.3).

Storage:

Store at -20°C. Avoid freeze / thaw cycles. Buffer: PBS with 0.02% sodium azide, 50% glycerol, pH7.3.

Product Images



Western blot analysis of extracts of various cell lines, using SLC22A23 antibody (CAB14419) at 1:1000 dilution. Secondary antibody: HRP Goat Anti-Rabbit IgG (H+L) (CABS014) at 1:10000 dilution. Lysates/proteins: 25ug per lane. Blocking buffer: 3% nonfat dry milk in TBST. Detection: ECL Basic Kit (CABM00020). Exposure time: 1s.