

# RPP21 Rabbit Polyclonal Antibody



CAB14424

---

## Product Information

### Size:

20uL, 50uL, 100uL, 200uL

### Observed MW:

18kDa

### Calculated MW:

16kDa/17kDa/18kDa/20kDa

### Applications:

WB

### Reactivity:

Human, Mouse

## Antibody Information

### Recommended dilutions:

WB 1:500 - 1:2000

### Source:

Rabbit

### Isotype:

IgG

### Purification:

Affinity purification

## Protein Background

### Immunogen information

#### Gene ID:

79897

#### Uniprot

Q9H633

#### Synonyms:

RPP21; C6orf135; CAT60

#### Immunogen:

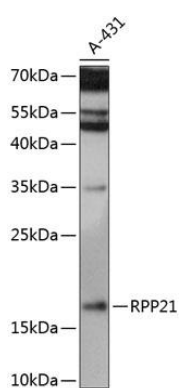
Recombinant fusion protein containing a sequence corresponding to amino acids 1-154 of human RPP21 (NP\_079115.1).

#### Storage:

Store at -20°C. Avoid freeze / thaw cycles. Buffer: PBS with 0.02% sodium azide, 50% glycerol, pH7.3.

## Product Images

---



Western blot analysis of extracts of A431 cells, using RPP21 antibody (CAB14424) at 1:3000 dilution. Secondary antibody: HRP Goat Anti-Rabbit IgG (H+L) (CABS014) at 1:10000 dilution. Lysates/proteins: 25ug per lane. Blocking buffer: 3% nonfat dry milk in TBST. Detection: ECL Enhanced Kit (CABM00021). Exposure time: 15s.