

CYP11B2 Rabbit Polyclonal Antibody



CAB1443

Product Information

Size:

20uL, 50uL, 100uL, 200uL

Observed MW:

50kDa

Calculated MW:

57kDa

Applications:

WB IHC IF

Reactivity:

Human, Mouse, Rat

Antibody Information

Recommended dilutions:

WB 1:500 - 1:1000 IHC 1:50
- 1:100 IF 1:50 - 1:100

Source:

Rabbit

Isotype:

IgG

Purification:

Affinity purification

Protein Background

This gene encodes a member of the cytochrome P450 superfamily of enzymes. The cytochrome P450 proteins are monooxygenases which catalyze many reactions involved in drug metabolism and synthesis of cholesterol, steroids and other lipids. This protein localizes to the mitochondrial inner membrane. The enzyme has steroid 18-hydroxylase activity to synthesize aldosterone and 18-oxocortisol as well as steroid 11 beta-hydroxylase activity. Mutations in this gene cause corticosterone methyl oxidase deficiency.

Immunogen information

Gene ID:

1585

Uniprot

P19099

Synonyms:

CYP11B2; ALDOS; CPN2; CYP11B; CYP11BL; CYPXIB2; P-450C18;
P450C18; P450aldo

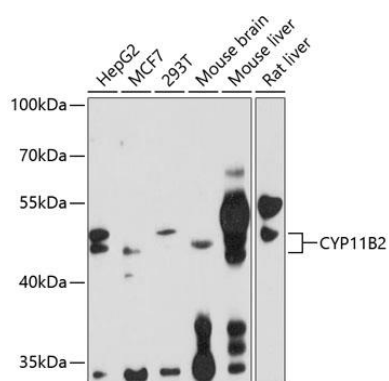
Immunogen:

Recombinant fusion protein containing a sequence corresponding to amino acids 234-503 of human CYP11B2 (NP_000489.3).

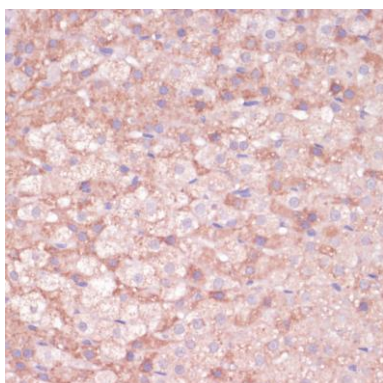
Storage:

Store at -20°C. Avoid freeze / thaw cycles. Buffer: PBS with 0.02% sodium azide, 50% glycerol, pH7.3.

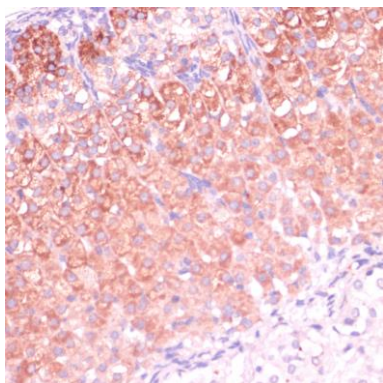
Product Images



Western blot analysis of extracts of various cell lines, using CYP11B2 antibody (CAB1443) at 1:1000 dilution. Secondary antibody: HRP Goat Anti-Rabbit IgG (H+L) (CABS014) at 1:10000 dilution. Lysates/proteins: 25ug per lane. Blocking buffer: 3% nonfat dry milk in TBST. Detection: ECL Enhanced Kit (CABM00021). Exposure time: 20s.



Immunohistochemistry of paraffin-embedded rat adrenal gland using CYP11B2 antibody (CAB1443) at dilution of 1:100 (40x lens).



Immunohistochemistry of paraffin-embedded mouse adrenal gland using CYP11B2 antibody (CAB1443) at dilution of 1:100 (40x lens).