

OMA1 Rabbit Polyclonal Antibody



CAB14437

Product Information

Size:

20uL, 50uL, 100uL, 200uL

Observed MW:

60kDa

Calculated MW:

55kDa/60kDa

Applications:

WB

Reactivity:

Human, Mouse

Antibody Information

Recommended dilutions:

WB 1:500 - 1:2000

Source:

Rabbit

Isotype:

IgG

Purification:

Affinity purification

Protein Background

Immunogen information

Gene ID:

115209

Uniprot

Q96E52

Synonyms:

OMA1; 2010001O09Rik; DAB1; MPRP-1; MPRP1; YKR087C; ZMPOMA1; peptidase

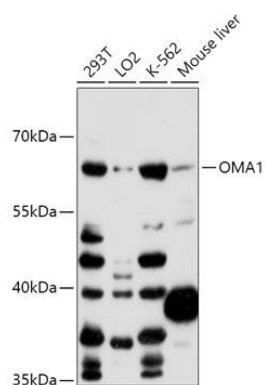
Immunogen:

Recombinant fusion protein containing a sequence corresponding to amino acids 360-524 of human OMA1 (NP_660286.1).

Storage:

Store at -20°C. Avoid freeze / thaw cycles. Buffer: PBS with 0.02% sodium azide, 50% glycerol, pH7.3.

Product Images



Western blot analysis of extracts of various cell lines, using OMA1 antibody (CAB14437) at 1:1000 dilution. Secondary antibody: HRP Goat Anti-Rabbit IgG (H+L) (CABS014) at 1:10000 dilution. Lysates/proteins: 25ug per lane. Blocking buffer: 3% nonfat dry milk in TBST. Detection: ECL Basic Kit (CABM00020). Exposure time: 60s.