

ASCL4 Rabbit Polyclonal Antibody



CAB14439

Product Information

Size:

20uL, 50uL, 100uL, 200uL

Observed MW:

19kDa

Calculated MW:

19kDa

Applications:

WB IHC

Reactivity:

Human, Rat

Antibody Information

Recommended dilutions:

WB 1:500 - 1:2000 IHC 1:50
- 1:100

Source:

Rabbit

Isotype:

IgG

Purification:

Affinity purification

Protein Background

Immunogen information

Gene ID:

121549

Uniprot

Q6XD76

Synonyms:

ASCL4; HASH4; bHLHa44

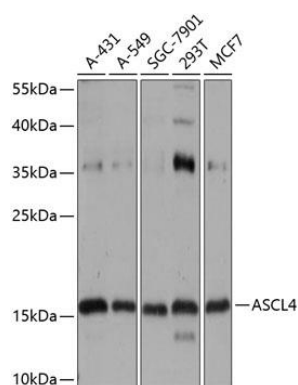
Immunogen:

Recombinant fusion protein containing a sequence corresponding to amino acids 1-172 of human ASCL4 (NP_982260.2).

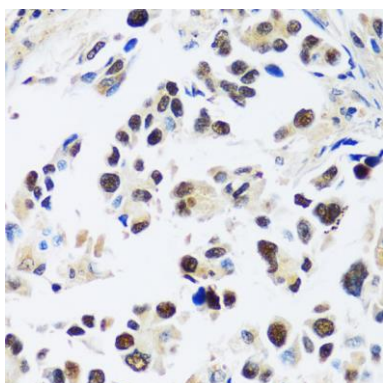
Storage:

Store at -20°C. Avoid freeze / thaw cycles. Buffer: PBS with 0.02% sodium azide, 50% glycerol, pH7.3.

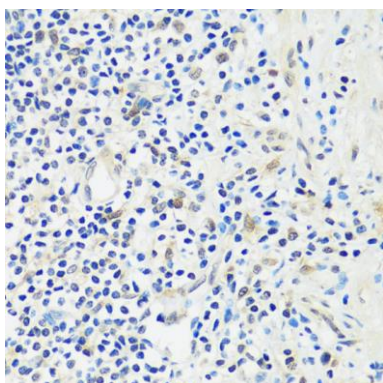
Product Images



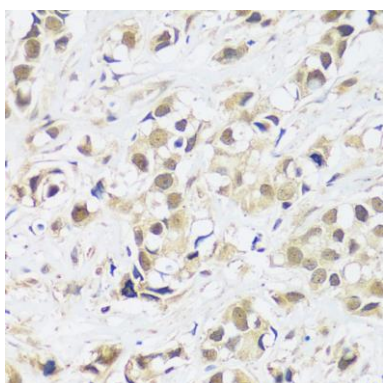
Western blot analysis of extracts of various cell lines, using ASCL4 antibody (CAB14439) at 1:1000 dilution. Secondary antibody: HRP Goat Anti-Rabbit IgG (H+L) (CABS014) at 1:10000 dilution. Lysates/proteins: 25ug per lane. Blocking buffer: 3% nonfat dry milk in TBST. Detection: ECL Enhanced Kit (CABM00021). Exposure time: 5s.



Immunohistochemistry of paraffin-embedded human lung cancer using ASCL4 antibody (CAB14439) at dilution of 1:100 (40x lens).



Immunohistochemistry of paraffin-embedded human appendix using ASCL4 antibody (CAB14439) at dilution of 1:100 (40x lens).



Immunohistochemistry of paraffin-embedded human breast cancer using ASCL4 antibody (CAB14439) at dilution of 1:100 (40x lens).