

NEURL2 Rabbit Polyclonal Antibody



CAB14450

Product Information

Size:

20uL, 50uL, 100uL, 200uL

Observed MW:

32kDa

Calculated MW:

31kDa

Applications:

WB

Reactivity:

Human, Mouse, Rat

Protein Background

This gene encodes a protein that is involved in the regulation of myofibril organization. This protein is likely the adaptor component of the E3 ubiquitin ligase complex in striated muscle, and it regulates the ubiquitin-mediated degradation of beta-catenin during myogenesis. Alternative splicing of this gene results in multiple transcript variants.

Immunogen information

Gene ID:

140825

Uniprot

Q9BR09

Synonyms:

NEURL2; C20orf163; OZZ; OZZ-E3

Antibody Information

Recommended dilutions:

WB 1:500 - 1:2000

Source:

Rabbit

Isotype:

IgG

Purification:

Affinity purification

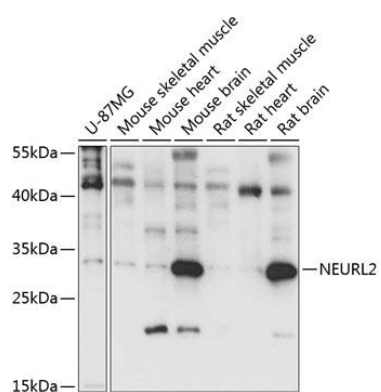
Immunogen:

Recombinant fusion protein containing a sequence corresponding to amino acids 181-285 of human NEURL2 (NP_542787.1).

Storage:

Store at -20°C. Avoid freeze / thaw cycles. Buffer: PBS with 0.02% sodium azide, 50% glycerol, pH7.3.

Product Images



Western blot analysis of extracts of various cell lines, using NEURL2 antibody (CAB14450) at 1:1000 dilution. Secondary antibody: HRP Goat Anti-Rabbit IgG (H+L) (CABS014) at 1:10000 dilution. Lysates/proteins: 25ug per lane. Blocking buffer: 3% nonfat dry milk in TBST. Detection: ECL Basic Kit (CABM00020). Exposure time: 15s.