

# ZNF597 Rabbit Polyclonal Antibody



CAB14452

---

## Product Information

### Size:

20uL, 50uL, 100uL, 200uL

### Observed MW:

48kDa

### Calculated MW:

48kDa

### Applications:

WB IHC IF

### Reactivity:

Human, Mouse, Rat

## Protein Background

This gene encodes a protein with multiple zinc finger domains. Loss of the related gene in rodents results in defects in neural development and embryonic lethality in mutant homozygotes. This gene is adjacent to a differentially methylated region (DMR) and is imprinted and maternally expressed.

## Immunogen information

### Gene ID:

146434

### Uniprot

Q96LX8

### Synonyms:

ZNF597; HIT-4

## Antibody Information

### Recommended dilutions:

WB 1:500 - 1:2000 IHC 1:50  
- 1:200 IF 1:50 - 1:200

### Source:

Rabbit

### Isotype:

IgG

### Purification:

Affinity purification

### Immunogen:

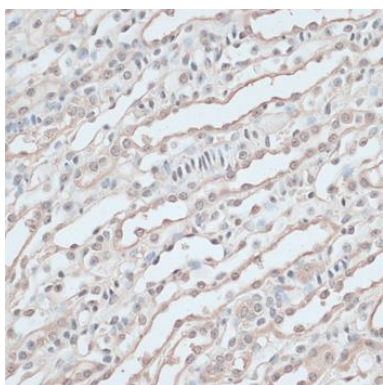
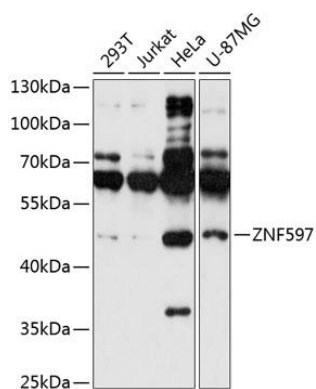
Recombinant fusion protein containing a sequence corresponding to amino acids 1-140 of human ZNF597 (NP\_689670.1).

### Storage:

Store at -20°C. Avoid freeze / thaw cycles. Buffer: PBS with 0.02% sodium azide, 50% glycerol, pH7.3.

## Product Images

---



Western blot analysis of extracts of various cell lines, using ZNF597 antibody (CAB14452) at 1:1000 dilution. Secondary antibody: HRP Goat Anti-Rabbit IgG (H+L) (CABS014) at 1:10000 dilution. Lysates/proteins: 25ug per lane. Blocking buffer: 3% nonfat dry milk in TBST. Detection: ECL Basic Kit (CABM00020). Exposure time: 10s.

Immunohistochemistry of paraffin-embedded mouse kidney using ZNF597 antibody (CAB14452) at dilution of 1:100 (40x lens).