

CPLX4 Rabbit Polyclonal Antibody



CAB14464

Product Information

Size:

20uL, 50uL, 100uL, 200uL

Observed MW:

18kDa

Calculated MW:

18kDa

Applications:

WB

Reactivity:

Rat

Antibody Information

Recommended dilutions:

WB 1:500 - 1:2000

Source:

Rabbit

Isotype:

IgG

Purification:

Affinity purification

Protein Background

This gene likely encodes a member of the complexin family. The encoded protein may be involved in synaptic vesicle exocytosis.

Immunogen information

Gene ID:

339302

Uniprot

Q7Z7G2

Synonyms:

CPLX4; CPX-IV; CPXIV

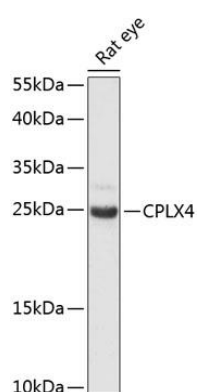
Immunogen:

Recombinant fusion protein containing a sequence corresponding to amino acids 1-160 of human CPLX4 (NP_857637.1).

Storage:

Store at -20°C. Avoid freeze / thaw cycles. Buffer: PBS with 0.02% sodium azide, 50% glycerol, pH7.3.

Product Images



Western blot analysis of extracts of rat eye, using CPLX4 antibody (CAB14464) at 1:3000 dilution. Secondary antibody: HRP Goat Anti-Rabbit IgG (H+L) (CABS014) at 1:10000 dilution. Lysates/proteins: 25ug per lane. Blocking buffer: 3% nonfat dry milk in TBST. Detection: ECL Enhanced Kit (CABM00021). Exposure time: 90s.