

CA13 Rabbit Polyclonal Antibody



CAB14467

Product Information

Size:

20uL, 50uL, 100uL, 200uL

Observed MW:

29kDa

Calculated MW:

29kDa

Applications:

WB IHC

Reactivity:

Human, Mouse

Antibody Information

Recommended dilutions:

WB 1:500 - 1:2000 IHC 1:50
- 1:100

Source:

Rabbit

Isotype:

IgG

Purification:

Affinity purification

Protein Background

Immunogen information

Gene ID:

377677

Uniprot

Q8N1Q1

Synonyms:

CA13; CAXIII

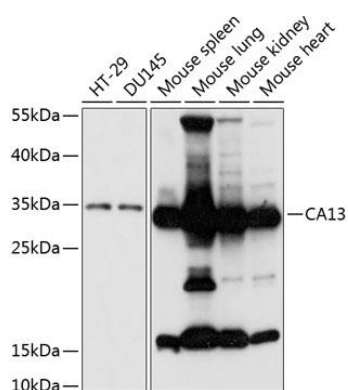
Immunogen:

Recombinant fusion protein containing a sequence corresponding to amino acids 1-220 of human CA13 (NP_940986.1).

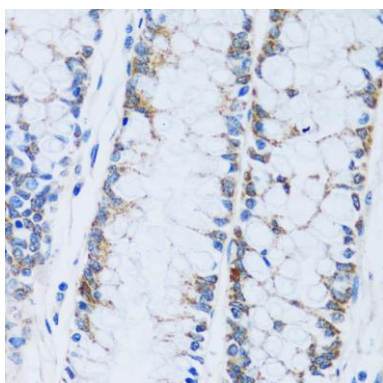
Storage:

Store at -20°C. Avoid freeze / thaw cycles. Buffer: PBS with 0.02% sodium azide, 50% glycerol, pH7.3.

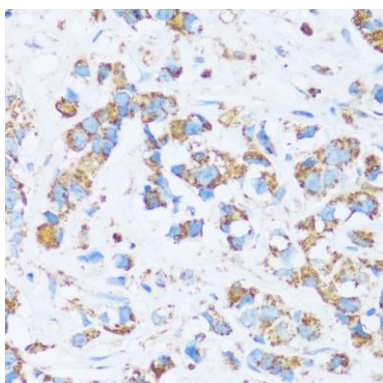
Product Images



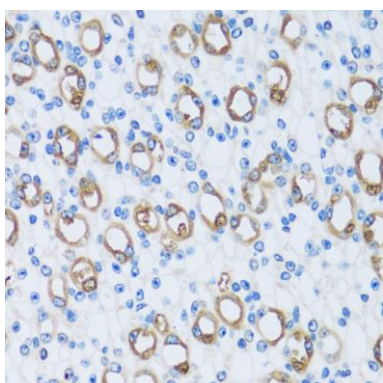
Western blot analysis of extracts of various cell lines, using CA13 antibody (CAB14467) at 1:3000 dilution. Secondary antibody: HRP Goat Anti-Rabbit IgG (H+L) (CABS014) at 1:10000 dilution. Lysates/proteins: 25ug per lane. Blocking buffer: 3% nonfat dry milk in TBST. Detection: ECL Basic Kit (CABM00020). Exposure time: 90s.



Immunohistochemistry of paraffin-embedded human colon using CA13 antibody (CAB14467) at dilution of 1:100 (40x lens).



Immunohistochemistry of paraffin-embedded human breast cancer using CA13 antibody (CAB14467) at dilution of 1:100 (40x lens).



Immunohistochemistry of paraffin-embedded mouse kidney using CA13 antibody (CAB14467) at dilution of 1:100 (40x lens).