

CNR1 Rabbit Polyclonal Antibody



CAB1447

Product Information

Size:

20uL, 50uL, 100uL, 200uL

Observed MW:

60kDa

Calculated MW:

45kDa/49kDa/52kDa

Applications:

WB IHC

Reactivity:

Human, Mouse, Rat

Antibody Information

Recommended dilutions:

WB 1:500 - 1:2000 IHC 1:50
- 1:100

Source:

Rabbit

Isotype:

IgG

Purification:

Affinity purification

Protein Background

This gene encodes one of two cannabinoid receptors. The cannabinoids, principally delta-9-tetrahydrocannabinol and synthetic analogs, are psychoactive ingredients of marijuana. The cannabinoid receptors are members of the guanine-nucleotide-binding protein (G-protein) coupled receptor family, which inhibit adenylate cyclase activity in a dose-dependent, stereoselective and pertussis toxin-sensitive manner. The two receptors have been found to be involved in the cannabinoid-induced CNS effects (including alterations in mood and cognition) experienced by users of marijuana. Multiple transcript variants encoding two different protein isoforms have been described for this gene.

Immunogen information

Gene ID:

1268

Uniprot

P21554

Synonyms:

CNR1; CANN6; CB-R; CB1; CB1A; CB1K5; CB1R; CNR

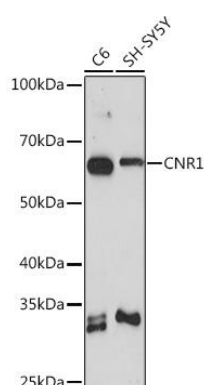
Immunogen:

Recombinant fusion protein containing a sequence corresponding to amino acids 1-120 of human CNR1 (NP_001153731.1).

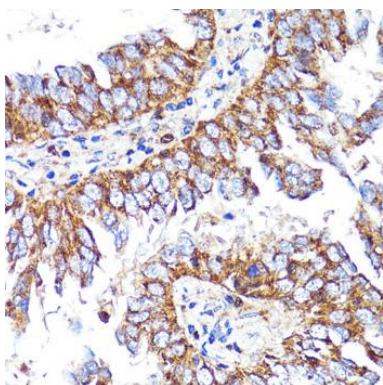
Storage:

Store at -20°C. Avoid freeze / thaw cycles. Buffer: PBS with 0.02% sodium azide, 50% glycerol, pH7.3.

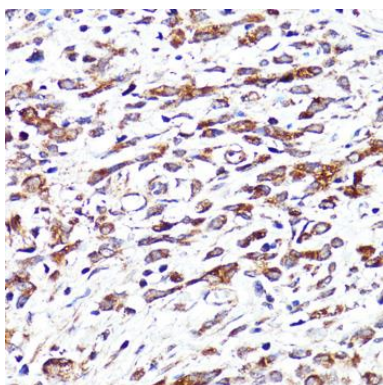
Product Images



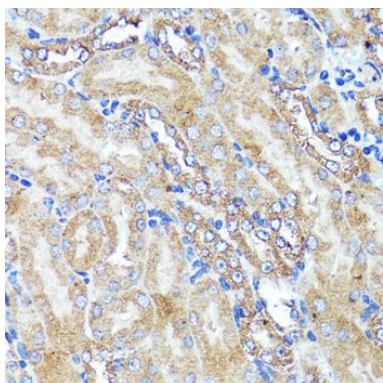
Western blot analysis of extracts of various cell lines, using CNR1 Rabbit pAb (CAB1447) at 1:1000 dilution. Secondary antibody: HRP Goat Anti-Rabbit IgG (H+L) (CABS014) at 1:10000 dilution. Lysates/proteins: 25ug per lane. Blocking buffer: 3% nonfat dry milk in TBST. Detection: ECL Basic Kit (CABM00020). Exposure time: 180s.



Immunohistochemistry of paraffin-embedded human lung cancer using CNR1 antibody (CAB1447) at dilution of 1:150 (40x lens).



Immunohistochemistry of paraffin-embedded human stomach cancer using CNR1 antibody (CAB1447) at dilution of 1:150 (40x lens).



Immunohistochemistry of paraffin-embedded mouse kidney using CNR1 antibody (CAB1447) at dilution of 1:150 (40x lens).