

# GOLIM4 Rabbit Polyclonal Antibody



CAB14478

## Product Information

### Size:

20uL, 50uL, 100uL, 200uL

### Observed MW:

130kDa

### Calculated MW:

81kDa

### Applications:

WB

### Reactivity:

Human, Mouse

## Protein Background

The Golgi complex plays a key role in the sorting and modification of proteins exported from the endoplasmic reticulum. The protein encoded by this gene is a type II Golgi-resident protein. It may process proteins synthesized in the rough endoplasmic reticulum and assist in the transport of protein cargo through the Golgi apparatus.

## Immunogen information

### Gene ID:

27333

### Uniprot

O00461

### Synonyms:

GOLIM4; GIMPC; GOLPH4; GPP130; P138

## Antibody Information

### Recommended dilutions:

WB 1:500 - 1:2000

### Source:

Rabbit

### Isotype:

IgG

### Purification:

Affinity purification

### Immunogen:

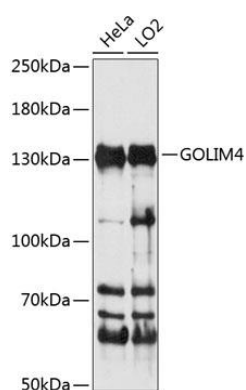
Recombinant fusion protein containing a sequence corresponding to amino acids 34-300 of human GOLIM4 (NP\_055313.1).

### Storage:

Store at -20°C. Avoid freeze / thaw cycles. Buffer: PBS with 0.02% sodium azide, 50% glycerol, pH7.3.

## Product Images

---



Western blot analysis of extracts of various cell lines, using GOLIM4 antibody (CAB14478) at 1:1000 dilution. Secondary antibody: HRP Goat Anti-Rabbit IgG (H+L) (CABS014) at 1:10000 dilution. Lysates/proteins: 25ug per lane. Blocking buffer: 3% nonfat dry milk in TBST. Detection: ECL Basic Kit (CABM00020). Exposure time: 30s.