

PEBP4 Rabbit Polyclonal Antibody



CAB14485

Product Information

Size:

20uL, 50uL, 100uL, 200uL

Observed MW:

26kDa

Calculated MW:

25kDa

Applications:

WB

Reactivity:

Mouse

Antibody Information

Recommended dilutions:

WB 1:500 - 1:1000

Source:

Rabbit

Isotype:

IgG

Purification:

Affinity purification

Protein Background

Immunogen information

Gene ID:

157310

Uniprot

Q96S96

Synonyms:

PEBP4; CORK-1; CORK1; GWTM1933; HEL-S-300; PEBP-4; PRO4408; hPEBP4

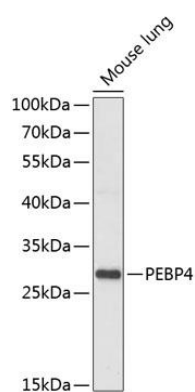
Immunogen:

Recombinant fusion protein containing a sequence corresponding to amino acids 23-120 of human PEBP4 (NP_659399.2).

Storage:

Store at -20°C. Avoid freeze / thaw cycles. Buffer: PBS with 0.02% sodium azide, 50% glycerol, pH7.3.

Product Images



Western blot analysis of extracts of mouse lung, using PEBP4 antibody (CAB14485) at 1:1000 dilution. Secondary antibody: HRP Goat Anti-Rabbit IgG (H+L) (CABS014) at 1:10000 dilution. Lysates/proteins: 25ug per lane. Blocking buffer: 3% nonfat dry milk in TBST. Detection: ECL Enhanced Kit (CABM00021). Exposure time: 30s.