

# DYNLL1 Rabbit Polyclonal Antibody



CAB14496

## Product Information

### Size:

20uL, 50uL, 100uL, 200uL

### Observed MW:

12kDa

### Calculated MW:

10kDa

### Applications:

WB IHC IF

### Reactivity:

Human, Mouse, Rat

## Antibody Information

### Recommended dilutions:

WB 1:500 - 1:2000 IHC 1:50  
- 1:100 IF 1:50 - 1:100

### Source:

Rabbit

### Isotype:

IgG

### Purification:

Affinity purification

## Protein Background

Cytoplasmic dyneins are large enzyme complexes with a molecular mass of about 1, 200 kD. They contain two force-producing heads formed primarily from dynein heavy chains, and stalks linking the heads to a basal domain, which contains a varying number of accessory intermediate chains. The complex is involved in intracellular transport and motility. The protein described in this record is a light chain and exists as part of this complex but also physically interacts with and inhibits the activity of neuronal nitric oxide synthase. Binding of this protein destabilizes the neuronal nitric oxide synthase dimer, a conformation necessary for activity, and it may regulate numerous biologic processes through its effects on nitric oxide synthase activity. Alternate transcriptional splice variants have been characterized.

## Immunogen information

### Gene ID:

8655

### Uniprot

P63167

### Synonyms:

DYNLL1; DLC1; DLC8; DNCL1; DNCLC1; LC8; LC8a; PIN; hdlc1

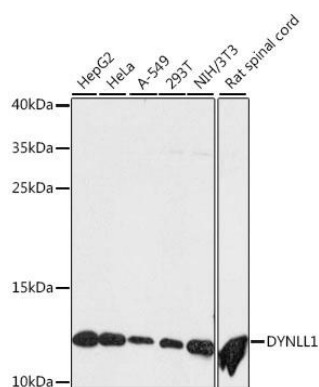
### Immunogen:

A synthetic peptide corresponding to a sequence within amino acids 1-89 of human DYNLL1 (NP\_003737.1).

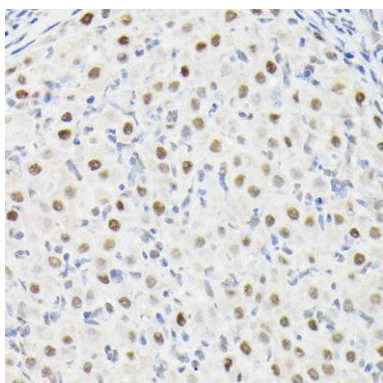
### Storage:

Store at -20°C. Avoid freeze / thaw cycles. Buffer: PBS with 0.02% sodium azide, 50% glycerol, pH7.3.

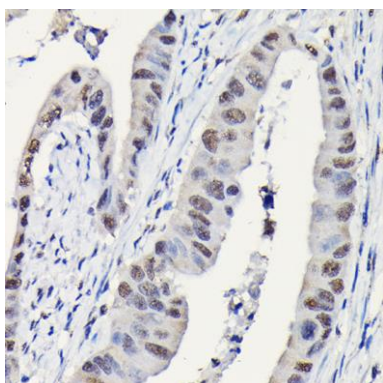
## Product Images



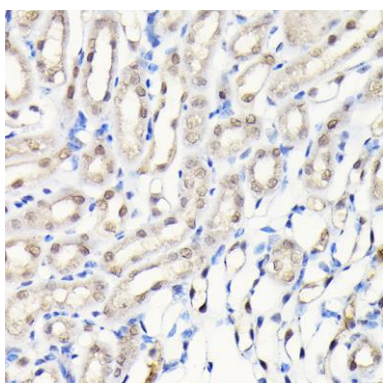
Western blot analysis of extracts of various cell lines, using DYNLL1 antibody (CAB14496) at 1:500 dilution. Secondary antibody: HRP Goat Anti-Rabbit IgG (H+L) (CABS014) at 1:10000 dilution. Lysates/proteins: 25ug per lane. Blocking buffer: 3% nonfat dry milk in TBST. Detection: ECL Basic Kit (CABM00020). Exposure time: 90s.



Immunohistochemistry of paraffin-embedded rat ovary using DYNLL1 Rabbit pAb (CAB14496) at dilution of 1:100 (40x lens).



Immunohistochemistry of paraffin-embedded human colon carcinoma using DYNLL1 Rabbit pAb (CAB14496) at dilution of 1:100 (40x lens).



Immunohistochemistry of paraffin-embedded mouse kidney using DYNLL1 Rabbit pAb (CAB14496) at dilution of 1:100 (40x lens).