

# PES1 Rabbit Polyclonal Antibody



CAB14506

## Product Information

### Size:

20uL, 50uL, 100uL, 200uL

### Observed MW:

68kDa

### Calculated MW:

67kDa/68kDa

### Applications:

WB

### Reactivity:

Human

## Protein Background

This gene encodes a nuclear protein that contains a breast cancer associated gene 1 (BRCA1) C-terminal interaction domain. The encoded protein interacts with BOP1 and WDR12 to form the PeBoW complex, which plays a critical role in cell proliferation via pre-rRNA processing and 60S ribosomal subunit maturation. Expression of this gene may play an important role in breast cancer proliferation and tumorigenicity. Alternatively spliced transcript variants encoding multiple isoforms have been observed for this gene. Pseudogenes of this gene are located on the long arm of chromosome 4 and the short arm of chromosome 9.

## Immunogen information

### Gene ID:

23481

### Uniprot

O00541

### Synonyms:

PES1; PES; NOP7

## Antibody Information

### Recommended dilutions:

WB 1:500 - 1:2000

### Source:

Rabbit

### Isotype:

IgG

### Purification:

Affinity purification

### Immunogen:

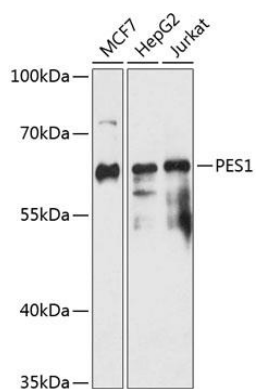
Recombinant fusion protein containing a sequence corresponding to amino acids 1-150 of human PES1 (NP\_055118.1).

### Storage:

Store at -20°C. Avoid freeze / thaw cycles. Buffer: PBS with 0.02% sodium azide, 50% glycerol, pH7.3.

## Product Images

---



Western blot analysis of extracts of various cell lines, using PES1 antibody (CAB14506) at 1:3000 dilution. Secondary antibody: HRP Goat Anti-Rabbit IgG (H+L) (CABS014) at 1:10000 dilution. Lysates/proteins: 25ug per lane. Blocking buffer: 3% nonfat dry milk in TBST. Detection: ECL Enhanced Kit (CABM00021). Exposure time: 30s.