

APOBEC3C Rabbit Polyclonal Antibody



CAB14510

Product Information

Size:

20uL, 50uL, 100uL, 200uL

Observed MW:

22kDa

Calculated MW:

22kDa

Applications:

WB IP

Reactivity:

Human

Antibody Information

Recommended dilutions:

WB 1:500 - 1:2000 IP 1:50 - 1:100

Source:

Rabbit

Isotype:

IgG

Purification:

Affinity purification

Protein Background

This gene is a member of the cytidine deaminase gene family. It is one of seven related genes or pseudogenes found in a cluster thought to result from gene duplication, on chromosome 22. Members of the cluster encode proteins that are structurally and functionally related to the C to U RNA-editing cytidine deaminase APOBEC1. It is thought that the proteins may be RNA editing enzymes and have roles in growth or cell cycle control.

Immunogen information

Gene ID:

27350

Uniprot

Q9NRW3

Synonyms:

APOBEC3C; A3C; APOBEC1L; ARDC2; ARDC4; ARP5; PBI; bK150C2.3

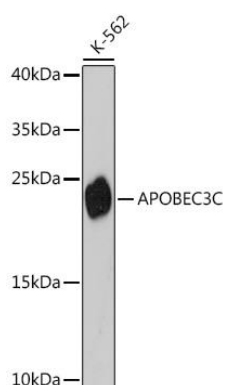
Immunogen:

Recombinant fusion protein containing a sequence corresponding to amino acids 1-190 of human APOBEC3C (NP_055323.2).

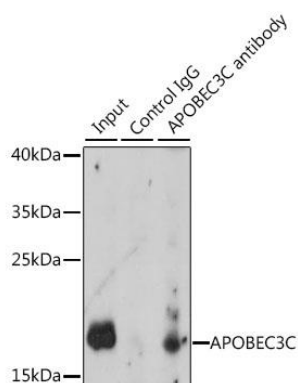
Storage:

Store at -20°C. Avoid freeze / thaw cycles. Buffer: PBS with 0.02% sodium azide, 50% glycerol, pH7.3.

Product Images



Western blot analysis of extracts of K-562 cells, using APOBEC3C antibody (CAB14510) at 1:3000 dilution. Secondary antibody: HRP Goat Anti-Rabbit IgG (H+L) (CABS014) at 1:10000 dilution. Lysates/proteins: 25ug per lane. Blocking buffer: 3% nonfat dry milk in TBST. Detection: ECL Basic Kit (CABM00020). Exposure time: 90s.



Immunoprecipitation analysis of 200ug extracts of K-562 cells, using 3 ug APOBEC3C antibody (CAB14510). Western blot was performed from the immunoprecipitate using APOBEC3C antibody (CAB14510) at a dilution of 1:1000.