

UIMC1 Rabbit Polyclonal Antibody



CAB14512

Product Information

Size:

20uL, 50uL, 100uL, 200uL

Observed MW:

102kDa

Calculated MW:

17kDa/38kDa/61kDa/70kDa/
79kDa

Applications:

WB

Reactivity:

Human, Mouse

Antibody Information

Recommended dilutions:

WB 1:500 - 1:2000

Source:

Rabbit

Isotype:

IgG

Purification:

Affinity purification

Protein Background

This gene encodes a nuclear protein that interacts with Brca1 (breast cancer 1) in a complex to recognize and repair DNA lesions. This protein binds ubiquitinated lysine 63 of histone H2A and H2AX. This protein may also function as a repressor of transcription. Alternative splicing results in multiple transcript variants.

Immunogen information

Gene ID:

51720

Uniprot

Q96RL1

Synonyms:

UIMC1; RAP80; X2HRIP110

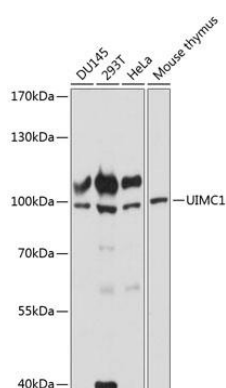
Immunogen:

Recombinant fusion protein containing a sequence corresponding to amino acids 449-719 of human UIMC1 (NP_057374.3).

Storage:

Store at -20°C. Avoid freeze / thaw cycles. Buffer: PBS with 0.02% sodium azide, 50% glycerol, pH7.3.

Product Images



Western blot analysis of extracts of various cell lines, using UIMC1 antibody (CAB14512) at 1:3000 dilution. Secondary antibody: HRP Goat Anti-Rabbit IgG (H+L) (CABS014) at 1:10000 dilution. Lysates/proteins: 25ug per lane. Blocking buffer: 3% nonfat dry milk in TBST. Detection: ECL Basic Kit (CABM00020). Exposure time: 90s.