

# SMYD3 Rabbit Polyclonal Antibody



CAB14516

## Product Information

### Size:

20uL, 50uL, 100uL, 200uL

### Observed MW:

49kDa

### Calculated MW:

29kDa/42kDa/49kDa

### Applications:

WB IHC IF

### Reactivity:

Human, Mouse, Rat

## Protein Background

This gene encodes a histone methyltransferase which functions in RNA polymerase II complexes by an interaction with a specific RNA helicase. Multiple transcript variants encoding different isoforms have been found for this gene.

## Immunogen information

### Gene ID:

64754

### Uniprot

Q9H7B4

### Synonyms:

SMYD3; KMT3E; ZMYND1; ZNFN3A1; bA74P14.1

## Antibody Information

### Recommended dilutions:

WB 1:500 - 1:2000 IHC 1:50  
- 1:200 IF 1:50 - 1:200

### Source:

Rabbit

### Isotype:

IgG

### Purification:

Affinity purification

### Immunogen:

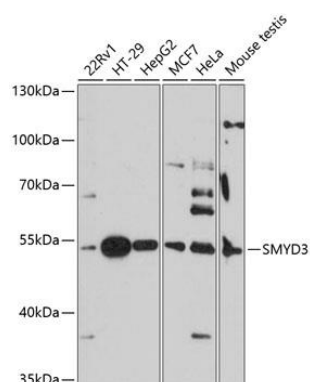
A synthetic peptide corresponding to a sequence within amino acids 50-150 of human SMYD3 (NP\_001161212.1).

### Storage:

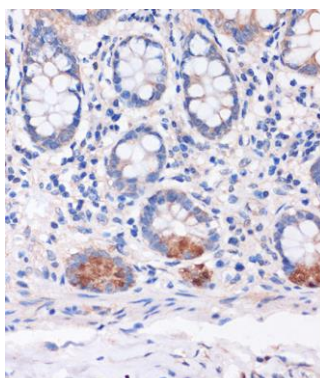
Store at -20°C. Avoid freeze / thaw cycles. Buffer: PBS with 0.02% sodium azide, 50% glycerol, pH7.3.

## Product Images

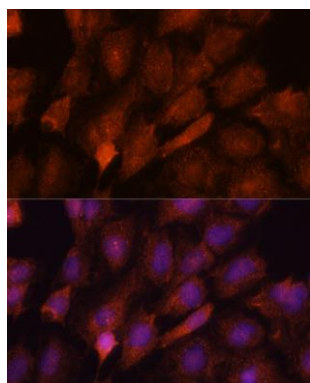
---



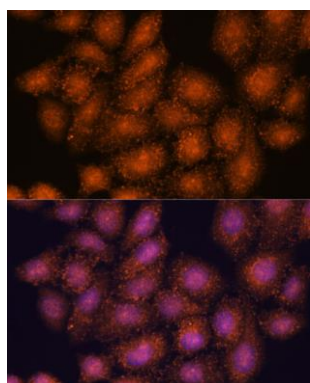
Western blot analysis of extracts of various cell lines, using SMYD3 antibody (CAB14516) at 1:3000 dilution. Secondary antibody: HRP Goat Anti-Rabbit IgG (H+L) (CABS014) at 1:10000 dilution. Lysates/proteins: 25ug per lane. Blocking buffer: 3% nonfat dry milk in TBST. Detection: ECL Basic Kit (CABM00020). Exposure time: 90s.



Immunohistochemistry of paraffin-embedded Human colon using SMYD3 Rabbit pAb (CAB14516) at dilution of 1:100 (40x lens).



Immunofluorescence analysis of C6 cells using SMYD3 antibody (CAB14516) at dilution of 1:100. Blue: DAPI for nuclear staining.



Immunofluorescence analysis of HeLa cells using SMYD3 antibody (CAB14516) at dilution of 1:100. Blue: DAPI for nuclear staining.