

# CALM3 Rabbit Polyclonal Antibody



CAB14526

## Product Information

### Size:

20uL, 50uL, 100uL, 200uL

### Observed MW:

17KDa

### Calculated MW:

16kDa

### Applications:

WB IHC

### Reactivity:

Human, Mouse, Rat

## Protein Background

This gene encodes a member of a family of proteins that binds calcium and functions as a enzymatic co-factor. Activity of this protein is important in the regulation of the cell cycle and cytokinesis. Multiple alternatively spliced transcript variants have been observed at this gene.

## Immunogen information

### Gene ID:

808

### Uniprot

P62158

### Synonyms:

CALM3; CaM; CaMIII; HEL-S-72; PHKD; PHKD3

## Antibody Information

### Recommended dilutions:

WB 1:500 - 1:2000 IHC 1:50  
- 1:100

### Source:

Rabbit

### Isotype:

IgG

### Purification:

Affinity purification

### Immunogen:

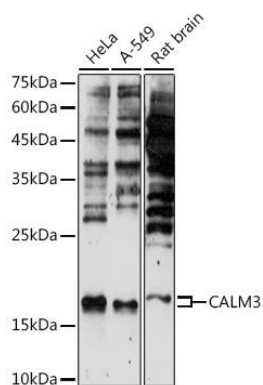
A synthetic peptide corresponding to a sequence within amino acids 1-100 of human CALM3 (NP\_005175.2).

### Storage:

Store at -20°C. Avoid freeze / thaw cycles. Buffer: PBS with 0.02% sodium azide, 50% glycerol, pH7.3.

## Product Images

---



Western blot analysis of extracts of various cell lines, using CALM3 antibody (CAB14526) at 1:500 dilution. Secondary antibody: HRP Goat Anti-Rabbit IgG (H+L) (CABS014) at 1:10000 dilution. Lysates/proteins: 25ug per lane. Blocking buffer: 3% nonfat dry milk in TBST. Detection: ECL Enhanced Kit (CABM00021). Exposure time: 180s.