

# FGA Rabbit Polyclonal Antibody



CAB1453

---

## Product Information

**Size:**

20uL, 50uL, 100uL, 200uL

**Observed MW:**

95KDa/60-70KDa

**Calculated MW:**

95kDa

**Category:**

Polyclonal Antibodies

**Applications:**

WB IHC-P

**Reactivity:**

Human, Mouse, Rat

**Conjugation:**

Unconjugated

## Antibody Information

**Recommended dilutions:**

WB 1:500 - 1:1000

IHC-P 1:50 - 1:200

**Source:**

Rabbit

**Isotype:**

IgG

**Purification:**

Affinity purification

## Protein Background

This gene encodes the alpha subunit of the coagulation factor fibrinogen, which is a component of the blood clot. Following vascular injury, the encoded preproprotein is proteolytically processed by thrombin during the conversion of fibrinogen to fibrin. Mutations in this gene lead to several disorders, including dysfibrinogenemia, hypofibrinogenemia, afibrinogenemia and renal amyloidosis. Alternative splicing results in multiple transcript variants, at least one of which encodes an isoform that undergoes proteolytic processing.

## Immunogen information

**Gene ID:**

2243

**Uniprot**

P02671

**Synonyms:**

Fib2

**Immunogen:**

Recombinant fusion protein containing a sequence corresponding to amino acids 410-559 of human Fibrinogen alpha chain (FGA) (NP\_000499.1).

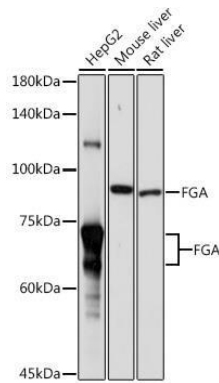
**Storage:**

Store at -20°C. Avoid freeze / thaw cycles.

Buffer: PBS with 0.01% thiomersal, 50% glycerol, pH7.3.

## Product Images

---



Western blot analysis of extracts of various cell lines, using FGA antibody (CAB1453) at 1:1000 dilution.

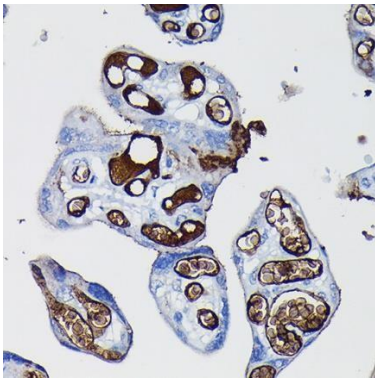
Secondary antibody: HRP Goat Anti-Rabbit IgG (H+L) (CABS014) at 1:10000 dilution.

Lysates/proteins: 25ug per lane.

Blocking buffer: 3% non-fat dry milk in TBST.

Detection: ECL Basic Kit (AbGn00020).

Exposure time: 1s.



Immunohistochemistry of paraffin- embedded human placenta using Fibrinogen alpha chain (Fibrinogen alpha chain (FGA)) Rabbit pAb (CAB1453) at dilution of 1:100 (40x lens). Perform high pressure antigen retrieval with 10 mM citrate buffer pH 6.0 before commencing with IHC staining protocol.