

# DNASE1 Rabbit Polyclonal Antibody



CAB14531

## Product Information

### Size:

20uL, 50uL, 100uL, 200uL

### Observed MW:

Refer to Figures

### Calculated MW:

19kDa/31kDa

### Applications:

WB IF

### Reactivity:

Mouse, Rat

## Antibody Information

### Recommended dilutions:

WB 1:500 - 1:2000 IF 1:50 - 1:200

### Source:

Rabbit

### Isotype:

IgG

### Purification:

Affinity purification

## Protein Background

This gene encodes a member of the DNase family. This protein is stored in the zymogen granules of the nuclear envelope and functions by cleaving DNA in an endonucleolytic manner. At least six autosomal codominant alleles have been characterized, DNASE1\*1 through DNASE1\*6, and the sequence of DNASE1\*2 represented in this record. Mutations in this gene have been associated with systemic lupus erythematosus (SLE), an autoimmune disease. A recombinant form of this protein is used to treat the one of the symptoms of cystic fibrosis by hydrolyzing the extracellular DNA in sputum and reducing its viscosity. Alternate transcriptional splice variants of this gene have been observed but have not been thoroughly characterized.

## Immunogen information

### Gene ID:

1773

### Uniprot

P24855

### Synonyms:

DNASE1; DNL1; DRNI

### Immunogen:

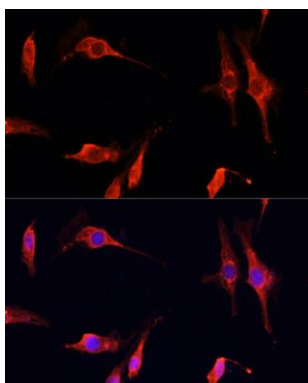
Recombinant fusion protein containing a sequence corresponding to amino acids 30-235 of human DNASE1 (NP\_005214.2).

### Storage:

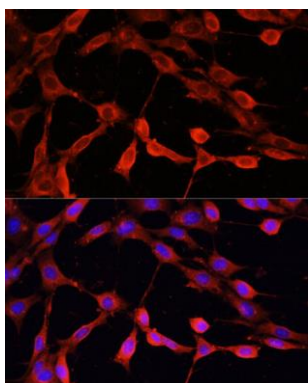
Store at -20°C. Avoid freeze / thaw cycles. Buffer: PBS with 0.02% sodium azide, 50% glycerol, pH7.3.

## Product Images

---



Immunofluorescence analysis of C6 cells using DNASE1 Polyclonal Antibody (CAB14531) at dilution of 1:100 (40x lens). Blue: DAPI for nuclear staining.



Immunofluorescence analysis of NIH-3T3 cells using DNASE1 Polyclonal Antibody (CAB14531) at dilution of 1:100 (40x lens). Blue: DAPI for nuclear staining.