

ACHE Rabbit Polyclonal Antibody



CAB1454

Product Information

Size:

20uL100uL, 200uL

Observed MW:

68kDa

Calculated MW:

58kDa/65kDa/67kDa

Applications:

WB IHC IF FC

Reactivity:

Human, Mouse

Antibody Information

Recommended dilutions:

WB 1:200 - 1:2000 IHC 1:50
- 1:200 IF 1:50 - 1:200 FC
1:20 - 1:50

Source:

Rabbit

Isotype:

IgG

Purification:

Affinity purification

Protein Background

Acetylcholinesterase hydrolyzes the neurotransmitter, acetylcholine at neuromuscular junctions and brain cholinergic synapses, and thus terminates signal transmission. It is also found on the red blood cell membranes, where it constitutes the Yt blood group antigen. Acetylcholinesterase exists in multiple molecular forms which possess similar catalytic properties, but differ in their oligomeric assembly and mode of cell attachment to the cell surface. It is encoded by the single ACHE gene, and the structural diversity in the gene products arises from alternative mRNA splicing, and post-translational associations of catalytic and structural subunits. The major form of acetylcholinesterase found in brain, muscle and other tissues is the hydrophilic species, which forms disulfide-linked oligomers with collagenous, or lipid-containing structural subunits. The other, alternatively spliced form, expressed primarily in the erythroid tissues, differs at the C-terminal end, and contains a cleavable hydrophobic peptide with a GPI-anchor site. It associates with the membranes through the phosphoinositide (PI) moieties added post-translationally.

Immunogen information

Gene ID:

43

Uniprot

P22303

Synonyms:

ACHE; ACEE; ARACHE; N-ACHE; YT

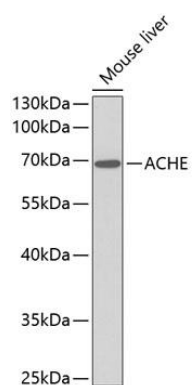
Immunogen:

A synthetic peptide of human ACHE

Storage:

Store at -20°C. Avoid freeze / thaw cycles. Buffer: PBS with 0.02% sodium azide, 50% glycerol, pH7.3.

Product Images



Western blot analysis of extracts of mouse liver, using ACHE antibody (CAB1454). Secondary antibody: HRP Goat Anti-Rabbit IgG (H+L) (CABS014) at 1:10000 dilution. Lysates/proteins: 25ug per lane. Blocking buffer: 3% nonfat dry milk in TBST.