

HTATSF1 Rabbit Polyclonal Antibody



CAB14542

Product Information

Size:

20uL, 50uL, 100uL, 200uL

Observed MW:

130kDa

Calculated MW:

85kDa

Applications:

WB IHC IF

Reactivity:

Human, Mouse, Rat

Protein Background

The protein encoded by this gene functions as a cofactor for the stimulation of transcriptional elongation by HIV-1 Tat, which binds to the HIV-1 promoter through Tat-TAR interaction. This protein may also serve as a dual-function factor to couple transcription and splicing and to facilitate their reciprocal activation. Alternatively spliced transcript variants have been found for this gene.

Immunogen information

Gene ID:

27336

Uniprot

O43719

Synonyms:

HTATSF1; TAT-SF1; TATSF1; dJ196E23.2

Antibody Information

Recommended dilutions:

WB 1:500 - 1:2000 IHC 1:50
- 1:100 IF 1:50 - 1:200

Source:

Rabbit

Isotype:

IgG

Purification:

Affinity purification

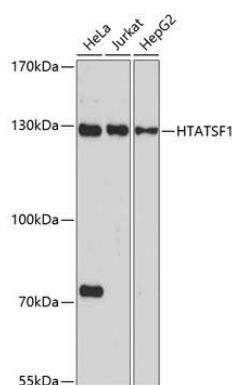
Immunogen:

Recombinant fusion protein containing a sequence corresponding to amino acids 1-180 of human HTATSF1 (NP_055315.2).

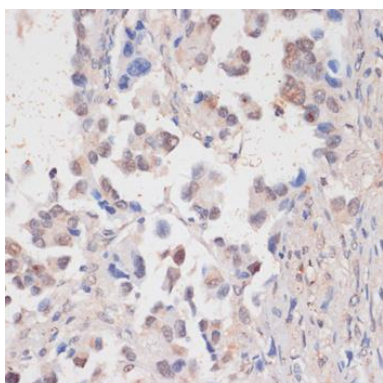
Storage:

Store at -20°C. Avoid freeze / thaw cycles. Buffer: PBS with 0.02% sodium azide, 50% glycerol, pH7.3.

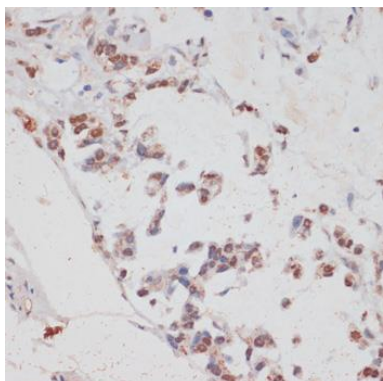
Product Images



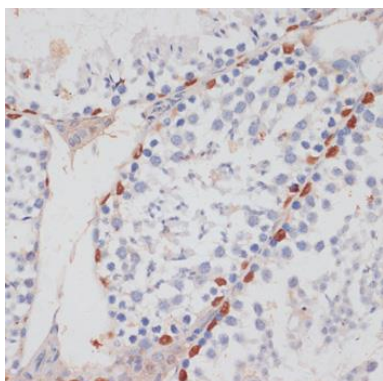
Western blot analysis of extracts of various cell lines, using HTATSF1 antibody (CAB14542) at 1:1000 dilution. Secondary antibody: HRP Goat Anti-Rabbit IgG (H+L) (CABS014) at 1:10000 dilution. Lysates/proteins: 25ug per lane. Blocking buffer: 3% nonfat dry milk in TBST. Detection: ECL Basic Kit (CABM00020). Exposure time: 90s.



Immunohistochemistry of paraffin-embedded human lung cancer using HTATSF1 antibody (CAB14542) at dilution of 1:100 (40x lens).



Immunohistochemistry of paraffin-embedded human gastric cancer using HTATSF1 antibody (CAB14542) at dilution of 1:100 (40x lens).



Immunohistochemistry of paraffin-embedded mouse testis using HTATSF1 antibody (CAB14542) at dilution of 1:100 (40x lens).