

GNAI2 Rabbit Polyclonal Antibody



CAB14547

Product Information

Size:

20uL, 50uL, 100uL, 200uL

Observed MW:

40kDa

Calculated MW:

34kDa/36kDa/38kDa/40kDa/
41kDa

Applications:

WB IF

Reactivity:

Human, Mouse, Rat

Antibody Information

Recommended dilutions:

WB 1:500 - 1:2000 IF 1:50 -
1:200

Source:

Rabbit

Isotype:

IgG

Purification:

Affinity purification

Protein Background

The protein encoded by this gene is an alpha subunit of guanine nucleotide binding proteins (G proteins). The encoded protein contains the guanine nucleotide binding site and is involved in the hormonal regulation of adenylate cyclase. Several transcript variants encoding different isoforms have been found for this gene.

Immunogen information

Gene ID:

2771

Uniprot

P04899

Synonyms:

GNAI2; GIP; GNAI2B; H_LUCA15.1; H_LUCA16.1

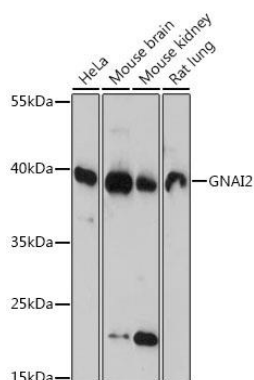
Immunogen:

Recombinant fusion protein containing a sequence corresponding to amino acids 1-355 of human GNAI2 (NP_002061.1).

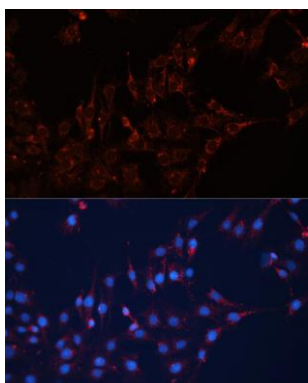
Storage:

Store at -20°C. Avoid freeze / thaw cycles. Buffer: PBS with 0.02% sodium azide, 50% glycerol, pH7.3.

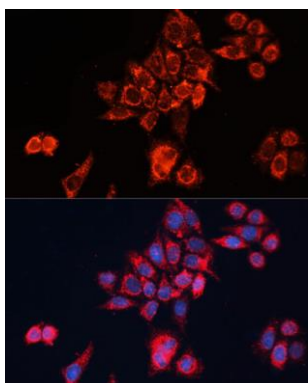
Product Images



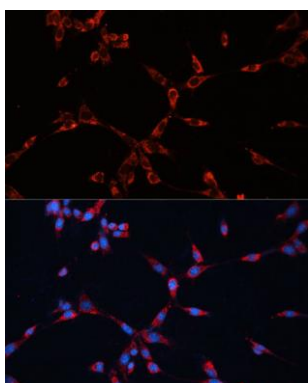
Western blot analysis of extracts of various cell lines, using GNAI2 antibody (CAB14547) at 1:1000 dilution. Secondary antibody: HRP Goat Anti-Rabbit IgG (H+L) (CABS014) at 1:10000 dilution. Lysates/proteins: 25ug per lane. Blocking buffer: 3% nonfat dry milk in TBST. Detection: ECL Basic Kit (CABM00020). Exposure time: 90s.



Immunofluorescence analysis of C6 cells using GNAI2 Polyclonal Antibody (CAB14547) at dilution of 1:100 (40x lens). Blue: DAPI for nuclear staining.



Immunofluorescence analysis of HeLa cells using GNAI2 Polyclonal Antibody (CAB14547) at dilution of 1:100 (40x lens). Blue: DAPI for nuclear staining.



Immunofluorescence analysis of NIH-3T3 cells using GNAI2 Polyclonal Antibody (CAB14547) at dilution of 1:100 (40x lens). Blue: DAPI for nuclear staining.