

TOMM22 Rabbit Polyclonal Antibody



CAB14548

Product Information

Size:

20uL, 50uL, 100uL, 200uL

Observed MW:

16kDa

Calculated MW:

15kDa

Applications:

WB IHC

Reactivity:

Human, Mouse

Protein Background

The protein encoded by this gene is an integral membrane protein of the mitochondrial outer membrane. The encoded protein interacts with TOMM20 and TOMM40, and forms a complex with several other proteins to import cytosolic preproteins into the mitochondrion.

Immunogen information

Gene ID:

56993

Uniprot

Q9NS69

Synonyms:

TOMM22; 1C9-2; MST065; MSTP065; TOM22

Antibody Information

Recommended dilutions:

WB 1:500 - 1:2000 IHC 1:50
- 1:200

Source:

Rabbit

Isotype:

IgG

Purification:

Affinity purification

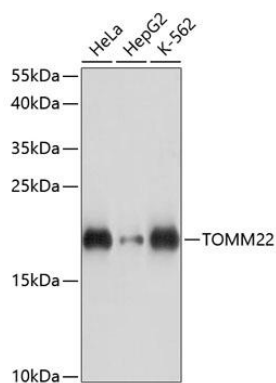
Immunogen:

Recombinant fusion protein containing a sequence corresponding to amino acids 1-83 of human TOMM22 (NP_064628.1).

Storage:

Store at -20°C. Avoid freeze / thaw cycles. Buffer: PBS with 0.02% sodium azide, 50% glycerol, pH7.3.

Product Images



Western blot analysis of extracts of various cell lines, using TOMM22 antibody (CAB14548) at 1:3000 dilution. Secondary antibody: HRP Goat Anti-Rabbit IgG (H+L) (CABS014) at 1:10000 dilution. Lysates/proteins: 25ug per lane. Blocking buffer: 3% nonfat dry milk in TBST. Detection: ECL Basic Kit (CABM00020). Exposure time: 10s.