

GSDMC Rabbit Polyclonal Antibody



CAB14550

Product Information

Size:

20uL, 50uL, 100uL, 200uL

Observed MW:

58kDa

Calculated MW:

57kDa

Applications:

WB IF

Reactivity:

Human, Mouse

Antibody Information

Recommended dilutions:

WB 1:500 - 1:2000 IF 1:50 - 1:200

Source:

Rabbit

Isotype:

IgG

Purification:

Affinity purification

Protein Background

Immunogen information

Gene ID:

56169

Uniprot

Q9BYG8

Synonyms:

GSDMC; MLZE

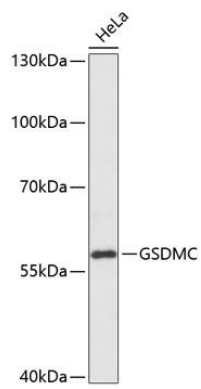
Immunogen:

Recombinant fusion protein containing a sequence corresponding to amino acids 1-100 of human GSDMC (NP_113603.1).

Storage:

Store at -20°C. Avoid freeze / thaw cycles. Buffer: PBS with 0.02% sodium azide, 50% glycerol, pH7.3.

Product Images



Western blot - GSDMC Rabbit pAb (CAB14550)