

Gamma-Tubulin Rabbit Polyclonal Antibody



CAB14554

Product Information

Size:

20uL, 50uL, 100uL, 200uL

Observed MW:

51kDa

Calculated MW:

51kDa

Applications:

WB, IF

Reactivity:

Human, Mouse, Rat

Protein Background

This gene encodes a member of the tubulin superfamily. The encoded protein localizes to the centrosome where it binds to microtubules as part of a complex referred to as the gamma-tubulin ring complex. The protein mediates microtubule nucleation and is required for microtubule formation and progression of the cell cycle. A pseudogene of this gene is found on chromosome 7.

Immunogen information

Gene ID:

7283

Uniprot

P23258

Synonyms:

TUBG1; CDCBM4; GCP-1; TUBG; TUBGCP1

Antibody Information

Recommended dilutions:

WB 1:500 - 1:2000

IF 1:50 - 1:200

Source:

Rabbit

Isotype:

IgG

Purification:

Affinity purification

Immunogen:

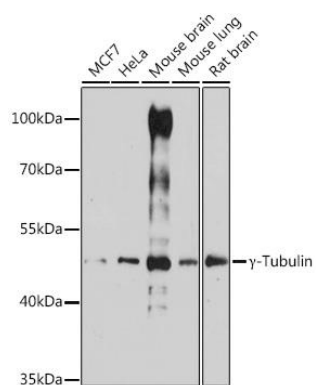
A synthetic peptide corresponding to a sequence within amino acids 350-450 of human Gamma-Tubulin (NP_001061.2).

Storage:

Store at -20°C. Avoid freeze / thaw cycles.

Buffer: PBS with 0.02% sodium azide, 50% glycerol, pH7.3.

Product Images



Western blot analysis of extracts of various cell lines, using gamma-Tubulin antibody (CAB14554) at 1:3000 dilution.

Secondary antibody: HRP Goat Anti-Rabbit IgG (H+L) (CABS014) at 1:10000 dilution.

Lysates/proteins: 25ug per lane.

Blocking buffer: 3% non-fat dry milk in TBST.

Detection: ECL Basic Kit (AbGn00020).

Exposure time: 90s.