

PNMA1 Rabbit Polyclonal Antibody



CAB14558

Product Information

Size:

20uL, 50uL, 100uL, 200uL

Observed MW:

38kDa

Calculated MW:

39kDa

Applications:

WB

Reactivity:

Human, Mouse, Rat

Protein Background

This gene encodes a neuron- and testis-specific protein that is also expressed in some paraneoplastic syndromes affecting the nervous system. Some patients with neurologic disorders develop antibodies against the protein encoded by this gene. The identification of the antineuronal antibodies in the sera of these patients has facilitated the diagnosis of paraneoplastic neurological disorders and the early detection of the associated tumors.

Immunogen information

Gene ID:

9240

Uniprot

Q8ND90

Synonyms:

PNMA1; MA1

Antibody Information

Recommended dilutions:

WB 1:500 - 1:2000

Source:

Rabbit

Isotype:

IgG

Purification:

Affinity purification

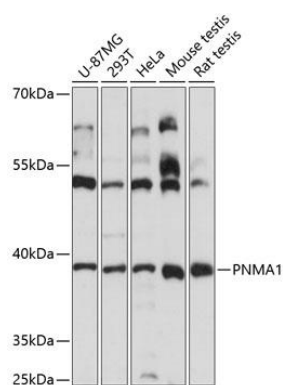
Immunogen:

Recombinant fusion protein containing a sequence corresponding to amino acids 1-353 of human PNMA1 (NP_006020.4).

Storage:

Store at -20°C. Avoid freeze / thaw cycles. Buffer: PBS with 0.02% sodium azide, 50% glycerol, pH7.3.

Product Images



Western blot analysis of extracts of various cell lines, using PNMA1 antibody (CAB14558) at 1:3000 dilution. Secondary antibody: HRP Goat Anti-Rabbit IgG (H+L) (CABS014) at 1:10000 dilution. Lysates/proteins: 25ug per lane. Blocking buffer: 3% nonfat dry milk in TBST. Detection: ECL Basic Kit (CABM00020). Exposure time: 15s.