

SLC47A1 Rabbit Polyclonal Antibody



CAB14559

Product Information

Size:

20uL, 50uL, 100uL, 200uL

Observed MW:

62kDa

Calculated MW:

31kDa/61kDa/63kDa

Applications:

WB

Reactivity:

Human, Rat

Antibody Information

Recommended dilutions:

WB 1:500 - 1:1000

Source:

Rabbit

Isotype:

IgG

Purification:

Affinity purification

Protein Background

This gene is located within the Smith-Magenis syndrome region on chromosome 17. It encodes a protein of unknown function.

Immunogen information

Gene ID:

55244

Uniprot

Q96FL8

Synonyms:

SLC47A1; MATE1

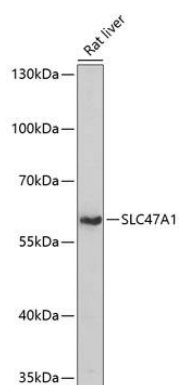
Immunogen:

Recombinant fusion protein containing a sequence corresponding to amino acids 460-550 of human SLC47A1 (NP_060712.2).

Storage:

Store at -20°C. Avoid freeze / thaw cycles. Buffer: PBS with 0.02% sodium azide, 50% glycerol, pH7.3.

Product Images



Western blot analysis of extracts of rat liver, using SLC47A1 antibody (CAB14559) at 1:1000 dilution. Secondary antibody: HRP Goat Anti-Rabbit IgG (H+L) (CABS014) at 1:10000 dilution. Lysates/proteins: 25ug per lane. Blocking buffer: 3% nonfat dry milk in TBST. Detection: ECL Basic Kit (CABM00020). Exposure time: 30s.