

# SLC26A2 Rabbit Polyclonal Antibody



CAB14561

---

## Product Information

### Size:

20uL, 50uL, 100uL, 200uL

### Observed MW:

82kDa

### Calculated MW:

81kDa

### Applications:

WB

### Reactivity:

Human, Mouse, Rat

## Protein Background

The diastrophic dysplasia sulfate transporter is a transmembrane glycoprotein implicated in the pathogenesis of several human chondrodysplasias. It apparently is critical in cartilage for sulfation of proteoglycans and matrix organization.

## Immunogen information

### Gene ID:

1836

### Uniprot

P50443

### Synonyms:

SLC26A2; D5S1708; DTD; DTDST; EDM4; MST153; MSTP157

## Antibody Information

### Recommended dilutions:

WB 1:500 - 1:2000

### Source:

Rabbit

### Isotype:

IgG

### Purification:

Affinity purification

### Immunogen:

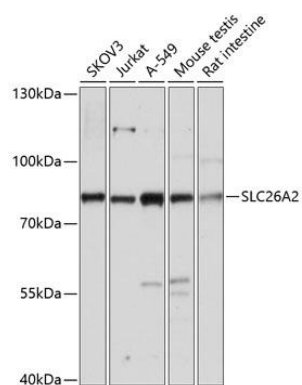
Recombinant fusion protein containing a sequence corresponding to amino acids 1-111 of human SLC26A2 (NP\_000103.2).

### Storage:

Store at -20°C. Avoid freeze / thaw cycles. Buffer: PBS with 0.02% sodium azide, 50% glycerol, pH7.3.

## Product Images

---



Western blot analysis of extracts of various cell lines, using SLC26A2 antibody (CAB14561) at 1:3000 dilution. Secondary antibody: HRP Goat Anti-Rabbit IgG (H+L) (CABS014) at 1:10000 dilution. Lysates/proteins: 25ug per lane. Blocking buffer: 3% nonfat dry milk in TBST. Detection: ECL Basic Kit (CABM00020). Exposure time: 30s.