

# SLC37A4 Rabbit Polyclonal Antibody



CAB14564

## Product Information

### Size:

20uL, 50uL, 100uL, 200uL

### Observed MW:

46kDa

### Calculated MW:

46kDa/48kDa

### Applications:

WB IHC

### Reactivity:

Human, Mouse, Rat

## Antibody Information

### Recommended dilutions:

WB 1:500 - 1:2000 IHC 1:50  
- 1:200

### Source:

Rabbit

### Isotype:

IgG

### Purification:

Affinity purification

## Protein Background

This gene regulates glucose-6-phosphate transport from the cytoplasm to the lumen of the endoplasmic reticulum, in order to maintain glucose homeostasis. It also plays a role in ATP-mediated calcium sequestration in the lumen of the endoplasmic reticulum. Mutations in this gene have been associated with various forms of glycogen storage disease. Alternative splicing in this gene results in multiple transcript variants.

## Immunogen information

### Gene ID:

2542

### Uniprot

O43826

### Synonyms:

SLC37A4; G6PT1; G6PT2; G6PT3; GSD1b; GSD1c; GSD1d; PRO0685;  
TRG-19; TRG19

### Immunogen:

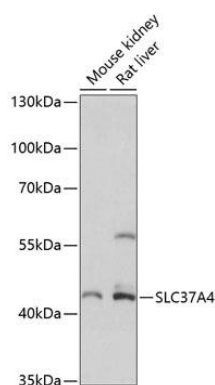
A synthetic peptide corresponding to a sequence within amino acids 300 to the C-terminus of human SLC37A4 (NP\_001157752.1).

### Storage:

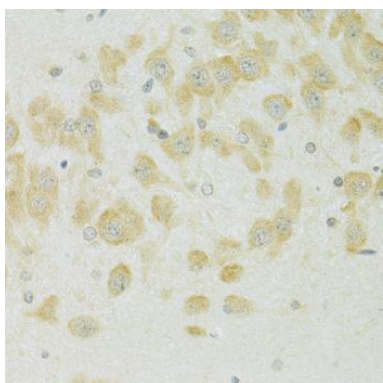
Store at -20°C. Avoid freeze / thaw cycles. Buffer: PBS with 0.02% sodium azide, 50% glycerol, pH7.3.

## Product Images

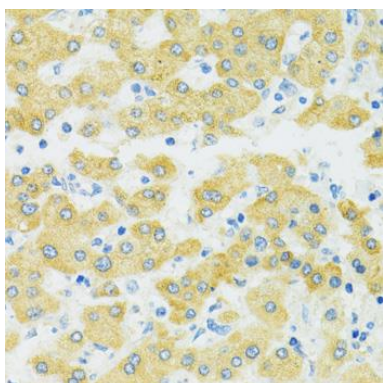
---



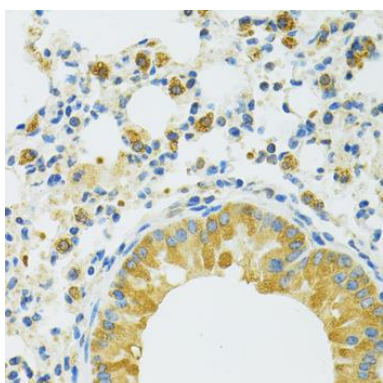
Western blot analysis of extracts of various cell lines, using SLC37A4 antibody (CAB14564) at 1:3000 dilution. Secondary antibody: HRP Goat Anti-Rabbit IgG (H+L) (CABS014) at 1:10000 dilution. Lysates/proteins: 25ug per lane. Blocking buffer: 3% nonfat dry milk in TBST. Detection: ECL Basic Kit (CABM00020). Exposure time: 90s.



Immunohistochemistry of paraffin-embedded rat brain using SLC37A4 antibody (CAB14564) at dilution of 1:100 (40x lens).



Immunohistochemistry of paraffin-embedded human liver using SLC37A4 antibody (CAB14564) at dilution of 1:100 (40x lens).



Immunohistochemistry of paraffin-embedded mouse lung using SLC37A4 antibody (CAB14564) at dilution of 1:100 (40x lens).