

**[KO Validated] DPYSL2 Rabbit Polyclonal  
Antibody  
CAB14570**



---

**Product Information**

**Size:**

20uL, 50uL, 100uL, 200uL

**Observed MW:**

62kDa

**Calculated MW:**

58kDa/62kDa

**Applications:**

WB IHC

**Reactivity:**

Human, Mouse, Rat

**Antibody Information**

**Recommended dilutions:**

WB 1:500 - 1:2000 IHC 1:50  
- 1:200

**Source:**

Rabbit

**Isotype:**

IgG

**Purification:**

Affinity purification

**Protein Background**

This gene encodes a member of the collapsin response mediator protein family. Collapsin response mediator proteins form homo- and hetero-tetramers and facilitate neuron guidance, growth and polarity. The encoded protein promotes microtubule assembly and is required for Sema3A-mediated growth cone collapse, and also plays a role in synaptic signaling through interactions with calcium channels. This gene has been implicated in multiple neurological disorders, and hyperphosphorylation of the encoded protein may play a key role in the development of Alzheimer's disease. Alternatively spliced transcript variants encoding multiple isoforms have been observed for this gene.

**Immunogen information**

**Gene ID:**

1808

**Uniprot**

Q16555

**Synonyms:**

DPYSL2; CRMP-2; CRMP2; DHPRP2; DRP-2; DRP2; N2A3; ULIP-2;  
ULIP2

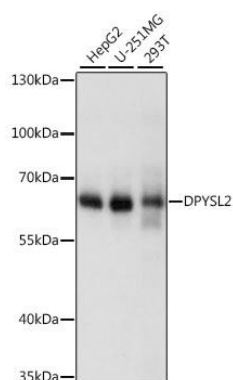
**Immunogen:**

A synthetic peptide corresponding to a sequence within amino acids 400-500 of human DPYSL2 (NP\_001377.1).

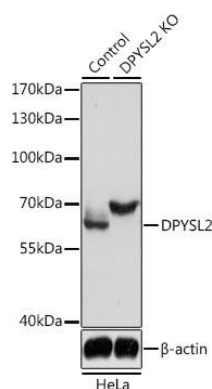
**Storage:**

Store at -20°C. Avoid freeze / thaw cycles. Buffer: PBS with 0.02% sodium azide, 50% glycerol, pH7.3.

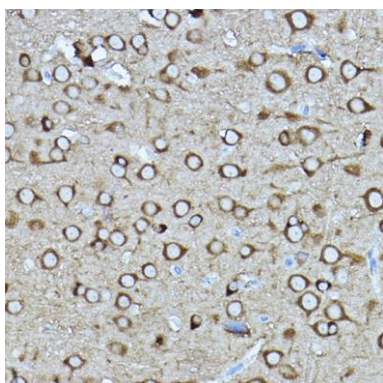
## Product Images



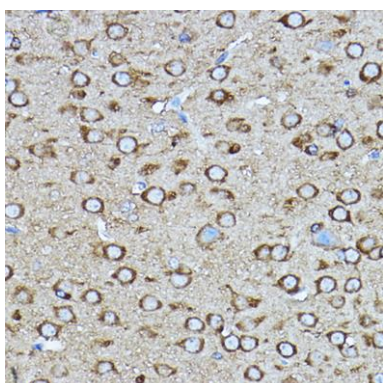
Western blot analysis of extracts of various cell lines, using DPYSL2 antibody (CAB14570) at 1:1000 dilution. Secondary antibody: HRP Goat Anti-Rabbit IgG (H+L) (CABS014) at 1:10000 dilution. Lysates/proteins: 25ug per lane. Blocking buffer: 3% nonfat dry milk in TBST. Detection: ECL Basic Kit (CABM00020). Exposure time: 10s.



Western blot analysis of extracts from normal (control) and DPYSL2 knockout (KO) HeLa cells, using DPYSL2 antibody (CAB14570) at 1:3000 dilution. Secondary antibody: HRP Goat Anti-Rabbit IgG (H+L) (CABS014) at 1:10000 dilution. Lysates/proteins: 25ug per lane. Blocking buffer: 3% nonfat dry milk in TBST. Detection: ECL Basic Kit (CABM00020). Exposure time: 5s.



Immunohistochemistry of paraffin-embedded rat brain using [KO Validated] DPYSL2 Rabbit pAb (CAB14570) at dilution of 1:400 (40x lens).



Immunohistochemistry of paraffin-embedded mouse brain using [KO Validated] DPYSL2 Rabbit pAb (CAB14570) at dilution of 1:400 (40x lens).