

SLC7A2 Rabbit Polyclonal Antibody



CAB14574

Product Information

Size:

20uL, 50uL, 100uL, 200uL

Observed MW:

72kDa

Calculated MW:

71kDa/75kDa/76kDa

Applications:

WB, IHC

Reactivity:

Human, Mouse, Rat

Category:

Polyclonal Antibodies

Protein Background

The protein encoded by this gene is a cationic amino acid transporter and a member of the APC (amino acid-polyamine-organocation) family of transporters. The encoded membrane protein is responsible for the cellular uptake of arginine, lysine and ornithine. Three transcript variants encoding different isoforms have been found for this gene.

Immunogen information

Gene ID:

6542

Uniprot

P52569

Synonyms:

SLC7A2; ATRC2; CAT2; HCAT2

Immunogen:

A synthetic peptide corresponding to a sequence within amino acids 500 to the C-terminus of human SLC7A2 (NP_001008539.3).

Antibody Information

Recommended dilutions:

WB 1:500 - 1:2000

IHC 1:50 - 1:100

Source:

Rabbit

Isotype:

IgG

Purification:

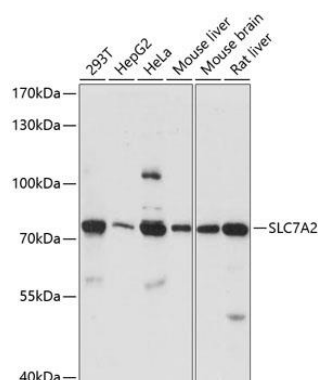
Affinity purification

Storage:

Store at -20°C. Avoid freeze / thaw cycles.

Buffer: PBS with 0.02% sodium azide, 50% glycerol, pH7.3.

Product Images



Western blot analysis of extracts of various cell lines, using SLC7A2 antibody (CAB14574) at 1:1000 dilution.

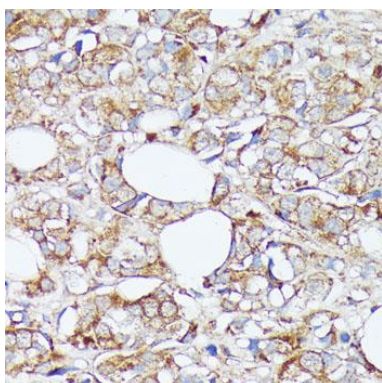
Secondary antibody: HRP Goat Anti-Rabbit IgG (H+L) (CABS014) at 1:10000 dilution.

Lysates/proteins: 25ug per lane.

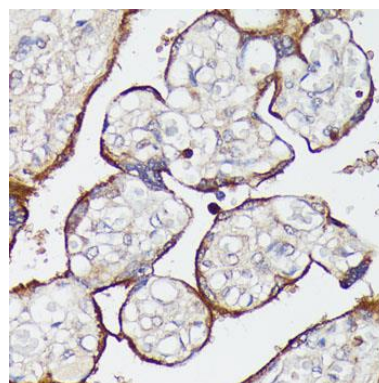
Blocking buffer: 3% non-fat dry milk in TBST.

Detection: ECL Basic Kit (AbGn00020).

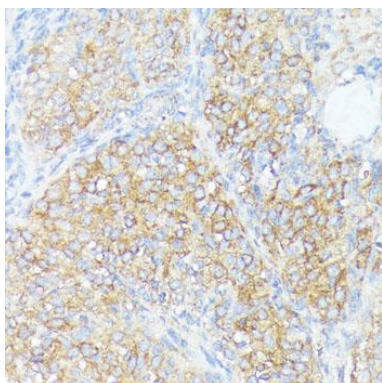
Exposure time: 90s.



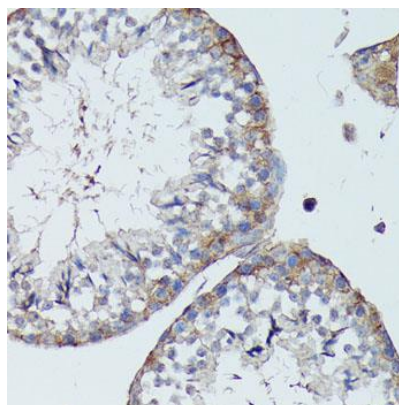
Immunohistochemistry of paraffin-embedded human mammary cancer using SLC7A2 antibody (CAB14574) at dilution of 1:100 (40x lens).



Immunohistochemistry of paraffin-embedded human placenta using SLC7A2 antibody (CAB14574) at dilution of 1:100 (40x lens).



Immunohistochemistry of paraffin-embedded rat ovary using SLC7A2 antibody (CAB14574) at dilution of 1:100 (40x lens).



Immunohistochemistry of paraffin-embedded mouse testis using SLC7A2 antibody (A14574) at dilution of 1:100 (40x lens).