

# SNW1 Rabbit Polyclonal Antibody



CAB14580

## Product Information

### Size:

20uL, 50uL, 100uL, 200uL

### Observed MW:

70kDa/75kDa

### Calculated MW:

61kDa

### Applications:

WB IHC IF

### Reactivity:

Human, Mouse, Rat

## Antibody Information

### Recommended dilutions:

WB 1:500 - 1:2000 IHC 1:50  
- 1:100 IF 1:50 - 1:200

### Source:

Rabbit

### Isotype:

IgG

### Purification:

Affinity purification

## Protein Background

This gene, a member of the SNW gene family, encodes a coactivator that enhances transcription from some Pol II promoters. This coactivator can bind to the ligand-binding domain of the vitamin D receptor and to retinoid receptors to enhance vitamin D-, retinoic acid-, estrogen-, and glucocorticoid-mediated gene expression. It can also function as a splicing factor by interacting with poly(A)-binding protein 2 to directly control the expression of muscle-specific genes at the transcriptional level. Finally, the protein may be involved in oncogenesis since it interacts with a region of SKI oncoproteins that is required for transforming activity. Alternative splicing results in multiple transcript variants.

## Immunogen information

### Gene ID:

22938

### Uniprot

Q13573

### Synonyms:

SNW1; Bx42; NCOA-62; PRPF45; Prp45; SKIIP; SKIP; FUN20; SKIP1

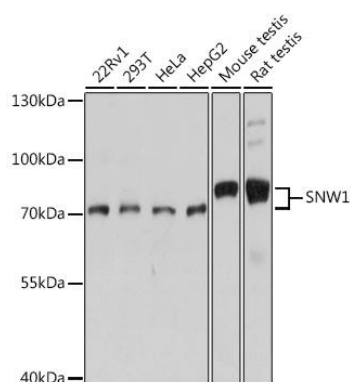
### Immunogen:

Recombinant fusion protein containing a sequence corresponding to amino acids 300-536 of human SNW1 (NP\_036377.1).

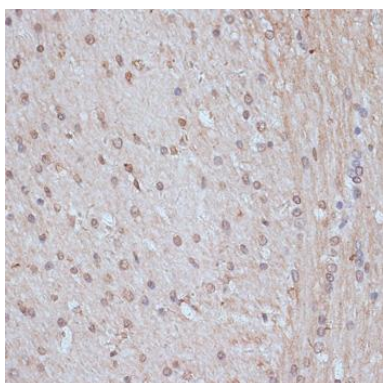
### Storage:

Store at -20°C. Avoid freeze / thaw cycles. Buffer: PBS with 0.02% sodium azide, 50% glycerol, pH7.3.

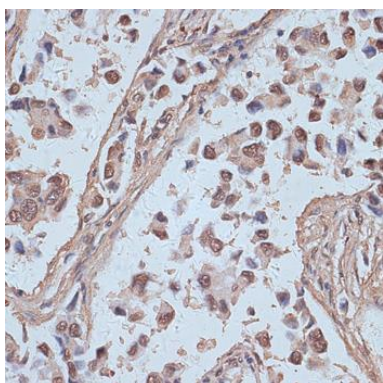
## Product Images



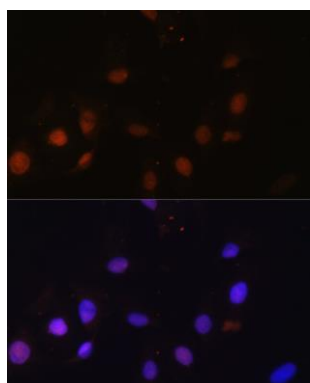
Western blot analysis of extracts of various cell lines, using SNW1 antibody (CAB14580) at 1:1000 dilution. Secondary antibody: HRP Goat Anti-Rabbit IgG (H+L) (CABS014) at 1:10000 dilution. Lysates/proteins: 25ug per lane. Blocking buffer: 3% nonfat dry milk in TBST. Detection: ECL Basic Kit (CABM00020). Exposure time: 10s.



Immunohistochemistry of paraffin-embedded rat brain using SNW1 antibody (CAB14580) at dilution of 1:100 (40x lens).



Immunohistochemistry of paraffin-embedded human lung cancer using SNW1 antibody (CAB14580) at dilution of 1:100 (40x lens).



Immunofluorescence analysis of U-2 OS cells using SNW1 antibody (CAB14580) at dilution of 1:100. Blue: DAPI for nuclear staining.