

HIGD1A Rabbit Polyclonal Antibody



CAB14582

Product Information

Size:

20uL, 50uL, 100uL, 200uL

Observed MW:

14kDa

Calculated MW:

10kDa/11kDa

Applications:

WB IHC IF

Reactivity:

Human

Antibody Information

Recommended dilutions:

WB 1:500 - 1:2000 IHC 1:50
- 1:100 IF 1:50 - 1:100

Source:

Rabbit

Isotype:

IgG

Purification:

Affinity purification

Protein Background

Immunogen information

Gene ID:

25994

Uniprot

Q9Y241

Synonyms:

HIGD1A; HIG1; RCF1a

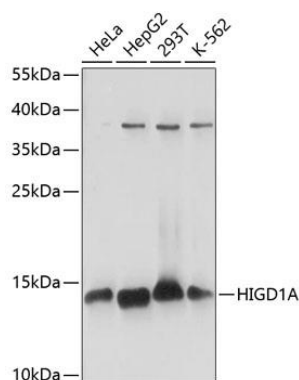
Immunogen:

A synthetic peptide corresponding to a sequence within amino acids 1-93 of human HIGD1A (NP_054775.2).

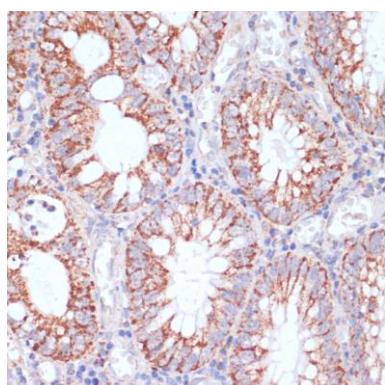
Storage:

Store at -20°C. Avoid freeze / thaw cycles. Buffer: PBS with 0.02% sodium azide, 50% glycerol, pH7.3.

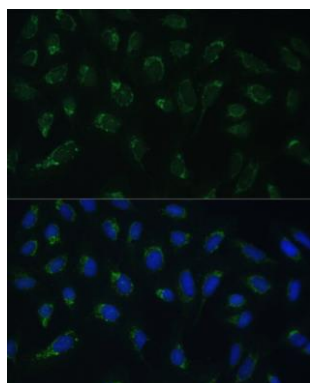
Product Images



Western blot analysis of extracts of various cell lines, using HIGD1A antibody (CAB14582) at 1:1000 dilution. Secondary antibody: HRP Goat Anti-Rabbit IgG (H+L) (CABS014) at 1:10000 dilution. Lysates/proteins: 25ug per lane. Blocking buffer: 3% nonfat dry milk in TBST. Detection: ECL Basic Kit (CABM00020). Exposure time: 1s.



Immunohistochemistry of paraffin-embedded human colon carcinoma using HIGD1A antibody (CAB14582) at dilution of 1:100 (40x lens).



Immunofluorescence analysis of U-2 OS cells using HIGD1A Polyclonal Antibody (CAB14582) at dilution of 1:100 (40x lens). Blue: DAPI for nuclear staining.