

# CDH19 Rabbit Polyclonal Antibody



**CAB14584**

---

## Product Information

### Size:

20uL, 50uL, 100uL, 200uL

### Observed MW:

87kDa

### Calculated MW:

55kDa/87kDa

### Applications:

WB

### Reactivity:

Human

## Protein Background

This gene is one of three related type II cadherin genes situated in a cluster on chromosome 18. The encoded protein is a calcium dependent cell-cell adhesion glycoprotein containing five extracellular cadherin repeats. Loss of cadherins may be associated with cancer formation. Alternative splicing results in multiple transcript variants for this gene.

## Immunogen information

### Gene ID:

28513

### Uniprot

Q9H159

### Synonyms:

CDH19; CDH7; CDH7L2

## Antibody Information

### Recommended dilutions:

WB 1:500 - 1:2000

### Source:

Rabbit

### Isotype:

IgG

### Purification:

Affinity purification

### Immunogen:

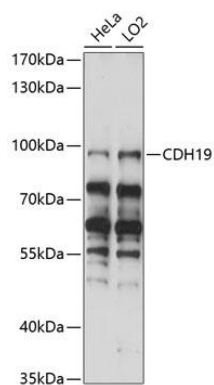
Recombinant fusion protein containing a sequence corresponding to amino acids 240-440 of human CDH19 (NP\_066976.1).

### Storage:

Store at -20°C. Avoid freeze / thaw cycles. Buffer: PBS with 0.02% sodium azide, 50% glycerol, pH7.3.

## Product Images

---



Western blot analysis of extracts of various cell lines, using CDH19 antibody (CAB14584) at 1:1000 dilution. Secondary antibody: HRP Goat Anti-Rabbit IgG (H+L) (CABS014) at 1:10000 dilution. Lysates/proteins: 25ug per lane. Blocking buffer: 3% nonfat dry milk in TBST. Detection: ECL Basic Kit (CABM00020). Exposure time: 30s.