

# COA3 Rabbit Polyclonal Antibody



CAB14585

---

## Product Information

### Size:

20uL, 50uL, 100uL, 200uL

### Observed MW:

12kDa

### Calculated MW:

11kDa

### Applications:

WB

### Reactivity:

Human

## Protein Background

This gene encodes a member of the cytochrome c oxidase assembly factor family. Studies of a related gene in fly suggest that the encoded protein is localized to mitochondria and is essential for cytochrome c oxidase function.

## Immunogen information

### Gene ID:

28958

### Uniprot

Q9Y2R0

### Synonyms:

COA3; CCDC56; COX25; HSPC009; MITRAC12

## Antibody Information

### Recommended dilutions:

WB 1:500 - 1:2000

### Source:

Rabbit

### Isotype:

IgG

### Purification:

Affinity purification

### Immunogen:

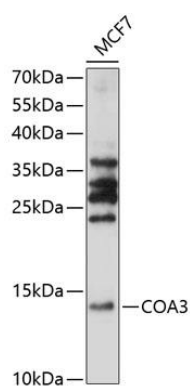
Recombinant fusion protein containing a sequence corresponding to amino acids 1-106 of human COA3 (NP\_001035521.1).

### Storage:

Store at -20°C. Avoid freeze / thaw cycles. Buffer: PBS with 0.02% sodium azide, 50% glycerol, pH7.3.

## Product Images

---



Western blot analysis of extracts of MCF7 cells, using COA3 antibody (CAB14585) at 1:1000 dilution. Secondary antibody: HRP Goat Anti-Rabbit IgG (H+L) (CABS014) at 1:10000 dilution. Lysates/proteins: 25ug per lane. Blocking buffer: 3% nonfat dry milk in TBST. Detection: ECL Basic Kit (CABM00020). Exposure time: 30s.