

# LZTS2 Rabbit Polyclonal Antibody



CAB14598

## Product Information

### Size:

20uL, 50uL, 100uL, 200uL

### Observed MW:

73kDa

### Calculated MW:

72kDa

### Applications:

WB

### Reactivity:

Human, Mouse, Rat

## Antibody Information

### Recommended dilutions:

WB 1:500 - 1:2000

### Source:

Rabbit

### Isotype:

IgG

### Purification:

Affinity purification

## Protein Background

The protein encoded by this gene belongs to the leucine zipper tumor suppressor family of proteins, which function in transcription regulation and cell cycle control. This family member can repress beta-catenin-mediated transcriptional activation and is a negative regulator of the Wnt signaling pathway. It negatively regulates microtubule severing at centrosomes, and is necessary for central spindle formation and cytokinesis completion. It is implicated in cancer, where it may inhibit cell proliferation and decrease susceptibility to tumor development. Alternative splicing of this gene results in multiple transcript variants.

## Immunogen information

### Gene ID:

84445

### Uniprot

Q9BRK4

### Synonyms:

LZTS2; LAPSER1

### Immunogen:

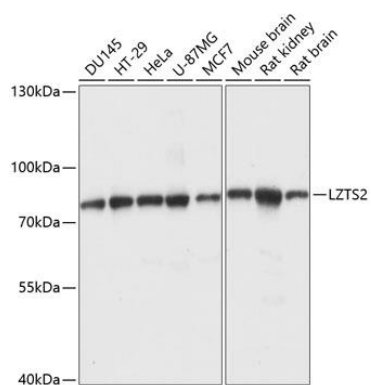
Recombinant fusion protein containing a sequence corresponding to amino acids 470-669 of human LZTS2 (NP\_115805.1).

### Storage:

Store at -20°C. Avoid freeze / thaw cycles. Buffer: PBS with 0.02% sodium azide, 50% glycerol, pH7.3.

## Product Images

---



Western blot analysis of extracts of various cell lines, using LZTS2 antibody (CAB14598) at 1:1000 dilution. Secondary antibody: HRP Goat Anti-Rabbit IgG (H+L) (CABS014) at 1:10000 dilution. Lysates/proteins: 25ug per lane. Blocking buffer: 3% nonfat dry milk in TBST. Detection: ECL Basic Kit (CABM00020). Exposure time: 5s.