

# SLC2A9 Rabbit Polyclonal Antibody



CAB14606

## Product Information

### Size:

20uL, 50uL, 100uL, 200uL

### Observed MW:

Refer to Figures

### Calculated MW:

55kDa/58kDa

### Applications:

WB IHC IF

### Reactivity:

Human, Mouse, Rat

## Protein Background

This gene encodes a member of the SLC2A facilitative glucose transporter family. Members of this family play a significant role in maintaining glucose homeostasis. The encoded protein may play a role in the development and survival of chondrocytes in cartilage matrices. Two transcript variants encoding distinct isoforms have been identified for this gene.

## Immunogen information

### Gene ID:

56606

### Uniprot

Q9NRM0

### Synonyms:

SLC2A9; GLUT9; GLUTX; UAQTL2; URATv1

## Antibody Information

### Recommended dilutions:

WB 1:500 - 1:2000 IHC 1:50  
- 1:200 IF 1:50 - 1:200

### Source:

Rabbit

### Isotype:

IgG

### Purification:

Affinity purification

### Immunogen:

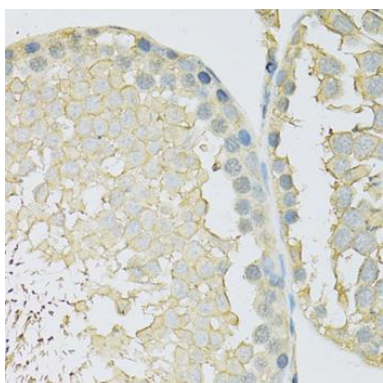
A synthetic peptide corresponding to a sequence within amino acids 400-500 of human SLC2A9 (NP\_001001290.1).

### Storage:

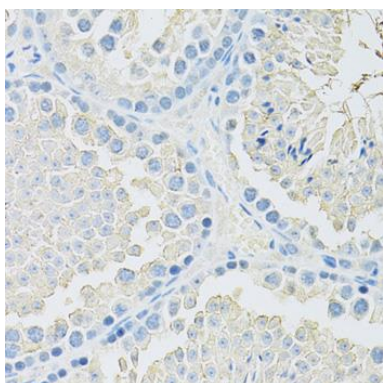
Store at -20°C. Avoid freeze / thaw cycles. Buffer: PBS with 0.02% sodium azide, 50% glycerol, pH7.3.

## Product Images

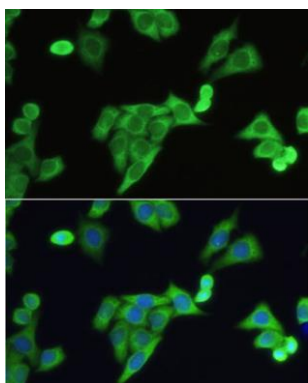
---



Immunohistochemistry of paraffin-embedded rat testis using SLC2A9 antibody (CAB14606) at dilution of 1:100 (40x lens).



Immunohistochemistry of paraffin-embedded mouse testis using SLC2A9 antibody (CAB14606) at dilution of 1:100 (40x lens).



Immunofluorescence analysis of HeLa cells using SLC2A9 antibody (CAB14606) at dilution of 1:100. Blue: DAPI for nuclear staining.