

# CTBP1 Rabbit Polyclonal Antibody



CAB14616

## Product Information

### Size:

20uL, 50uL, 100uL, 200uL

### Observed MW:

47kDa

### Calculated MW:

46kDa/47kDa

### Applications:

WB

### Reactivity:

Human, Mouse, Rat

## Protein Background

This gene encodes a protein that binds to the C-terminus of adenovirus E1A proteins. This phosphoprotein is a transcriptional repressor and may play a role during cellular proliferation. This protein and the product of a second closely related gene, CTBP2, can dimerize. Both proteins can also interact with a polycomb group protein complex which participates in regulation of gene expression during development. Alternative splicing of transcripts from this gene results in multiple transcript variants.

## Immunogen information

### Gene ID:

1487

### Uniprot

Q13363

### Synonyms:

CTBP1; BARS

## Antibody Information

### Recommended dilutions:

WB 1:500 - 1:2000

### Source:

Rabbit

### Isotype:

IgG

### Purification:

Affinity purification

### Immunogen:

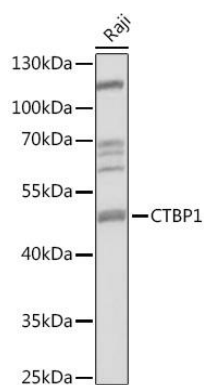
Recombinant fusion protein containing a sequence corresponding to amino acids 20-250 of human CTBP1 (NP\_001319.1).

### Storage:

Store at -20°C. Avoid freeze / thaw cycles. Buffer: PBS with 0.02% sodium azide, 50% glycerol, pH7.3.

## Product Images

---



Western blot analysis of extracts of Raji cells, using CTBP1 Rabbit pAb (CAB14616) at 1:1000 dilution. Secondary antibody: HRP Goat Anti-Rabbit IgG (H+L) (CABS014) at 1:10000 dilution. Lysates/proteins: 25ug per lane. Blocking buffer: 3% nonfat dry milk in TBST. Detection: ECL Basic Kit (CABM00020). Exposure time: 10s.