

MYH13 Rabbit Polyclonal Antibody



CAB14620

Product Information

Size:

20uL, 50uL, 100uL, 200uL

Observed MW:

250kDa

Calculated MW:

223kDa

Applications:

WB IHC IF

Reactivity:

Mouse, Rat

Antibody Information

Recommended dilutions:

WB 1:500 - 1:2000 IHC 1:50
- 1:100 IF 1:50 - 1:100

Source:

Rabbit

Isotype:

IgG

Purification:

Affinity purification

Protein Background

Immunogen information

Gene ID:

8735

Uniprot

Q9UKX3

Synonyms:

MYH13; MyHC-IIL; MyHC-eo; myosin-13

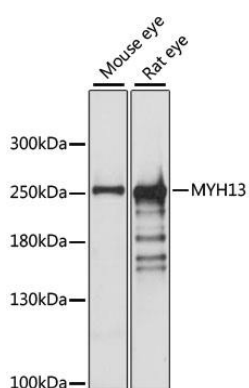
Immunogen:

Recombinant fusion protein containing a sequence corresponding to amino acids 1240-1320 of human MYH13 (NP_003793.2).

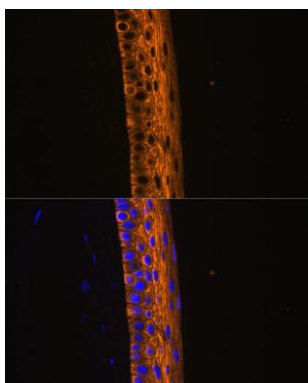
Storage:

Store at -20°C. Avoid freeze / thaw cycles. Buffer: PBS with 0.02% sodium azide, 50% glycerol, pH7.3.

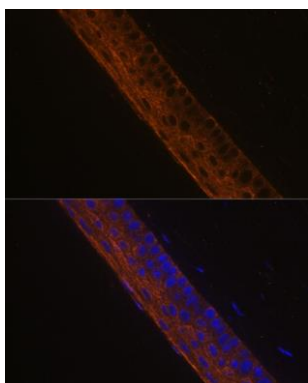
Product Images



Western blot analysis of extracts of various cell lines, using MYH13 antibody (CAB14620) at 1:1000 dilution. Secondary antibody: HRP Goat Anti-Rabbit IgG (H+L) (CABS014) at 1:10000 dilution. Lysates/proteins: 25ug per lane. Blocking buffer: 3% nonfat dry milk in TBST. Detection: ECL Basic Kit (CABM00020). Exposure time: 10s.



Immunofluorescence analysis of rat eye using MYH13 Polyclonal Antibody (CAB14620) at dilution of 1:100 (40x lens). Blue: DAPI for nuclear staining.



Immunofluorescence analysis of mouse eye using MYH13 Polyclonal Antibody (CAB14620) at dilution of 1:100 (40x lens). Blue: DAPI for nuclear staining.