

EIF4G3 Rabbit Polyclonal Antibody



CAB14621

Product Information

Size:

20uL, 50uL, 100uL, 200uL

Observed MW:

250kDa

Calculated MW:

55kDa/146kDa/176kDa/177kDa

Applications:

WB

Reactivity:

Human

Protein Background

The protein encoded by this gene is thought to be part of the eIF4F protein complex, which is involved in mRNA cap recognition and transport of mRNAs to the ribosome. Interestingly, a microRNA (miR-520c-3p) has been found that negatively regulates synthesis of the encoded protein, and this leads to a global decrease in protein translation and cell proliferation. Therefore, this protein is a key component of the anti-tumor activity of miR-520c-3p.

Immunogen information

Gene ID:

8672

Uniprot

O43432

Synonyms:

EIF4G3; eIF-4G 3; eIF4G 3; eIF4GII; eIF-4G3; eIF4G3

Antibody Information

Recommended dilutions:

WB 1:500 - 1:2000

Source:

Rabbit

Isotype:

IgG

Purification:

Affinity purification

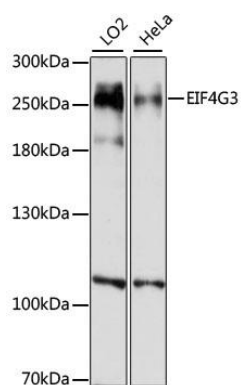
Immunogen:

Recombinant fusion protein containing a sequence corresponding to amino acids 1000-1200 of human EIF4G3 (NP_003751.2).

Storage:

Store at -20°C. Avoid freeze / thaw cycles. Buffer: PBS with 0.02% sodium azide, 50% glycerol, pH7.3.

Product Images



Western blot analysis of extracts of various cell lines, using EIF4G3 antibody (CAB14621) at 1:1000 dilution. Secondary antibody: HRP Goat Anti-Rabbit IgG (H+L) (CABS014) at 1:10000 dilution. Lysates/proteins: 25ug per lane. Blocking buffer: 3% nonfat dry milk in TBST. Detection: ECL Basic Kit (CABM00020). Exposure time: 30s.